

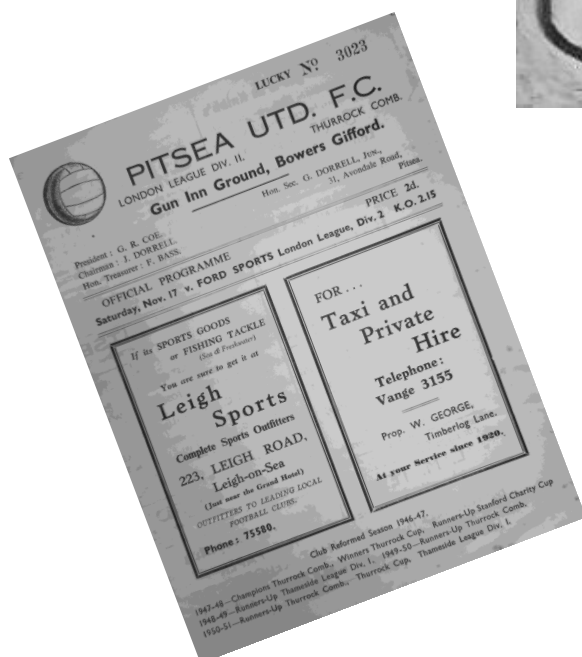


# PITSEA ATHLETIC F.C

1895 - 1910

# PITSEA UNITED. F. C

1909- 1971



**£8.70**

Registered Charity no. 1176037

Alan Cox 2023

Registered address: The Green Centre, Wat Tyler County Park, Pitsea Hall Lane, Pitsea, Essex, SS16 4UH

# FROM PITSEA MARSHES to LONDON LEAGUE!

In the year 1895 a handful of Scotsmen temporarily domiciled in Pitsea met and unanimously agreed that life in, what was then, a very small village needed stimulating, and like all true scotsmen they believed that the only game worth playing was "Footba." Accordingly, led by John McDade, they formed the first Football Club in Pitsea: this fore-runner to of Pitsea United was called Pitsea Athletic and the pitch was a field between the Fenchurch and Tilbury Railway Lines below Campbell's Garage,. Other founder members were Bob Little, Jimmy and Paddy McMahon, Bob Robertson and two "locals", Alf Mount and Laurie Bracey; an interesting link with the 19th century club is the Jim West, the present skipper, is the grandson of Laurie Bracey. The Club has had many ups and downs since then. The outbreak of the War, 1914 - 1918, found them playing at the Gun Inn, and such local stalwarts as George Sweeting, Ernie Evelin, Sonny Hammond, C Bartlett, Vic Woodward and George Kruse( Ivors father) were shinning lights. It is a far cry from those days when the lads changed in a barn, to the present Pitsea United, with their spacious dressing rooms, hot baths and showers, and competing for the first time in Senior Football. During next season, their first in the London League, many new friendships will be formed with team teams from Welwyn Garden City, Ruislip, Wapping, Lea Bridge, ect., visiting the district, and who can tell what Football honours lie in store. - G.D

John McDade, Robert Little worked at Explosive factory in Pitsea at that time.

## PITSEA UTD OPENING FIXTURES at the GUNN INN GROUND.

Sat, Sept 1 v. Wapping k.o. 3.30.

Sat. Sept 8th v. Welwyn Gd. C 3.30

This appeared in the Pitsea and Vange Festival of Britain Souvenir Programme 1951

## OUR SPORTS COLUMN

### NOTES BY A. SLOGGER

Mr C Morris writes me from Pitsea:- We have formed a club under the title Pitsea Athletic F. C., and shall be pleased to play any Essex Club of medium strength.

*Chelmsford Chronicle September 1897*

## Pitsea Athletic 1 Grove Athletic 0

*Barking, East Ham & Ilford Advertiser, Upton Park*

*and Dagenham Gazette October 1897*

## GRAYS CUP

Pitsea Athletic v Leigh Town

At Leigh 2.45.

Pitsea: G, Kruse, M, Intosh, Bracey, McDade, Robertson, Heenan, M, Kay, Gore, Mount,

M, Mahon and Howard.

*The Morning Leader, London, 20th Saturday, November 1897*

## Results of Matches

Southend United 2, Pitsea Athletic 0

*Barking, East Ham & Ilford Advertiser, Upton Park  
and Dagenham Gazette. December 1897*

## FOOTBALL NOTES

The Junior Cup semi finals

Leigh Reserves v Pitsea Athletic

*Southend Standard and Essex Weekly Advertiser December 1898*

# FOOTBALL NOTES

Leigh commenced their matches in the Grays Challenge Cup on Saturday by meeting Pitsea Athletic in the first round at Leigh.

The home club was somewhat disappointed when the draw disclosed their opponents, for the Committee were hoping to secure a visit from Grays Anchor with the expectation that the tie would draw a good gate.

When it is remembered that Leigh Reserves have defeated Pitsea Athletic this season by six goals, it is to be wondered at that interest in this match was lacking.

The result of Saturday's play, however, points to the questions as to what is the difference between Leighs first and second teams; for at the finish of this encounter there was four goals to one.

Pitsea Athletic Goal, R Robertson, backs, Bracey and Mount: halves A Gore, C Beckwith, and Kruse; forwards, W Craig, Cox, C Jarvis, McMatham and Morgan.

Referee Mr Waddell.

*Southend Standard and Essex Weekly Advertiser January 1899*

## Argosy 1 v Pitsea Athletic 1

This match was played on Pitsea's Ground on Saturday last, and ended in a draw of one goal each. In the first half the Argosy pressed, but only one goal was scored through Pope. Afterwards Pitsea improved, and had it not been for the Argosy's good defence, would have scored more than one.

*Gravesend & Northfleet Standard March 1899*

## KYNOCHTOWN

**FOOTBALL,-** Owing to the inclement weather the match between Kynoch Athletic and Pitsea Athletic took place last Saturday across the tea table at Pitsea. Mr Brewster occupied the chair, and the match rapidly developed into a smoking concert, when there seemed to be no lack of songs and speech making. The feature of the meeting, however, was the enthusiastic manner in which the whole company responded to the drinking of the health of Mr Burton (late captain of the Kynoch Athletic), who was been called out to war. The match closed at 8.30pm by the members of the two teams singing the National anthem.

*Grays and Tilbury Gazette, and Southend Telegraph Saturday 18th November 1899*

## PITSEA

The Athletic, Cricket, and Football Club had a supper and smoking concert at the Barge Inn, Vange, on Saturday, the landlord, Mr Hasler, having an extension of time given for the occasion. The guests were well catered for, and a capital programme was well carried out.

*Essex County Chronicle, Friday October 5th 1900.*



## Southend charity shield (second round)

### Southend Electric 2 v Pitsea Athletic 3

"How is it they cannot win ?" was the question asked by a spectator on the ground behind St John's Church on Saturday. "Because they have been vaccinated" came the reply from a companion and the crowd thereupon laughed. It is impossible to say whether or no this fact accounted for the falling off in quality of the Electrics football, but without doubt "something had gone wrong with the works" for it was certainly a marvel for them to be defeated on their own ground by 3 - 2 by a set of outsiders like Pitsea Athletic. And this in a second round of the Southend Charity Shield Competition: the defeated eleven having held the trophy for the past year.

Pitsea Athletic: Goal, Rouse, backs Christie and A Kruse, halves Lacey, McDade and Avery, forwards Gore, G Kruse, Dempsey, Taylor and Kirkhope.

*Southend Standard and Essex Weekly Advertiser - 16th January 1902*

## WEST HAM CHARITY CUP

### THIRD ROUND

### Pitsea Athletic 3, Southend Electric 2

*Chelmsford Chronicle Friday 17th January 1902*

## LEIGH JUNIOR CUP

### Leigh Town A v Pitsea Athletic.

Leigh Town A are still in the running for the Leigh Junior Cup, as they beat Pitsea Athletic at Pitsea on Saturday by 2 -- 1

*Southend Standard and Essex Weekly Advertiser. January 1902*

## FOOTBALL NOTES.

### SOUTH ESSEX LEAGUE

#### SOUTHEND AND DISTRICT LEAGUE.

##### PITSEA ATHLETIC v RAYLEIGH UNITED

Played at Pitsea on Saturday and resulted in a win for the homesters by 6 - 1. Play ruled fast from the start, soon Rayleigh were threatening the home goal, but the left back came to the rescue. Pitsea now raced away, and the same player soon afterwards increased his side's lead to 2 -- 0. Play ruled faster from the restart, and a third point fell to Pitsea : the ball being netted this time by G Kruse. A corner fell to the homesters before many more minutes had passed, out it proved fruitless and the United made an attempt to break away. Pitsea, however, were on the alert and drove their opponents back, Gore finishing up by completing the quartette. The United now got off and tested Rouse the home custodian, who saved

Grandly. Their efforts were however of no avail and half time arrived with Pitsea leading by 5 - 0; the other point having been obtained by Taylor.

In the second half the exchanges were more even and each side scored a goal; Taylor again doing the needful for the Athletic, who run out victors as above stated. Rouse played a brilliant game for the winners, whose superiority lay chiefly in their defence. Harvey McDade, Christie, and Lacey were also in good trim. Benson was prominent in the visiting front rank and the backs played well.

*Southend Standard September 25th 1902*

## FOOTBALL NOTES

### SOUTH ESSEX LEAGUE.

#### SOUTHCHURCH ROVERS 5 v PITSEA ATHLETIC 0.

##### PITSEA ATHLETIC TEAM

T. Rouse, A. Kruse and J Christie, W McDade, J J McDade and H Lacey, T B Kirkhope,

P Taylor, J Dempsey, G Kruse and A Gore.

*Southend Standard and Essex Weekly Advertiser November 1902*

## Southend Ramblers 3 v Pitsea 0

**At Pitsea.** The home team started the ball and they were fairly holding the Ramblers back, but they had the hardest of hard luck in front of goal. Ramblers were playing a good game, but Pitsea were equal to their visitors in play, though off form a little in the forward line. The Ramblers scored all their three goals in the first half, but they had to play for them. In the second half they were not successful at all, neither were Pitsea, though playing a good game and showing the Ramblers that there should not have been three goals difference between them. The Pitsea half-backs and backs were the best on the field.

*The Southend Standard 30th October 1902*

| SOUTHEND AND DISTRICT LEAGUE.                    |   |   |   |   |    |
|--|---|---|---|---|----|
| Southend Ramblers                                | 6 | 5 | 1 | 0 | 10 |
| Pitsea Athletic                                  | 7 | 4 | 2 | 1 | 9  |
| Shoebury Town                                    | 4 | 4 | 0 | 0 | 8  |
| Southchurch R'v's                                | 4 | 4 | 0 | 0 | 8  |
| Prittlewell Ramblers                             | 7 | 3 | 2 | 2 | 8  |
| Rayleigh United                                  | 7 | 3 | 4 | 0 | 6  |
| *Southend Athletic                               | 4 | 3 | 1 | 0 | 4  |
| Rochford Cong'l                                  | 8 | 2 | 6 | 0 | 4  |
| *School of Gunnery                               | 4 | 2 | 2 | 0 | 2  |
| Hockley  | 4 | 1 | 3 | 0 | 2  |
| Southend Wesleyans                               | 7 | 0 | 6 | 1 | 1  |
| Park Rangers                                     | 4 | 0 | 4 | 0 | 0  |
| *Two points deducted for playing ineligible men. |   |   |   |   |    |
| S. C. BRAGG,<br>Hon. Secretary.                  |   |   |   |   |    |

## SOUTHEND AND DISTRICT FOOTBALL LEAGUE

A Council meeting of the Southend and District Football League was held at the London Hotel, Southend, on Thursday evening. The Chairman (Mr E. G. Stuart) presided and was supported by the Secretary (Mr S. C. Bragg), and the following representatives of clubs were also present: C.O. Benson (Rayleigh United), P. Payne (Wesleyan), A. G. Gooch (Shoebury Town), F. M. Wardill (Southchurch Rovers), F. H. Hiscock (Hockley), E. G. Mills (Rochford Congregational), T. B. Kirkhope (Pitsea Athletic) C. Anderson (Southend Ramblers) and J. Budd (Southend Athletic).

**F.A.'S Sanction.-** The Secretary to the English Football Association (Mr F. J. Wall) wrote that the Association sanctioned the alteration in the rules and that in the number of Clubs forming the League.

**PITSEA PROTEST.-** A protest by Pitsea Athletic against a decision of the Secretary, the referee In their match with Southend Athletic A, was not considered, as under the rules it was decided that the referee's decision was always final and the matter never ought to have been brought before the Council.- It was agreed that the protest money should be forfeited.

**IRREGULARITIES.-** Southend Athletic for playing an ineligible man in their match against Pitsea Athletic, were ordered to have two points deducted and for a similar offence in their fixture with Shoebury Town on September 27th, the School of Gunnery were similarly dealt with.

*The Southend Standard 30th October 1902*

## In a game against Southchurch Rovers 5 v Pitsea Athletic 0

The team was T Rouse, A Kruse, J Chistie, W McDade, J McDade, H Lacey, T B Kirkhope, P Taylor, J Dempsey, G Kurse and A Gore.

*Southend Standard and Essex Weekly Advertiser*

*November 1902*

| SOUTHEND AND DISTRICT LEAGUE.                    |    |    |    |    |     |
|--|----|----|----|----|-----|
| Position of Clubs to date:—                      |    |    |    |    |     |
|  | P. | W. | L. | D. | Pts |
| Shoebury Town ...                                | 6  | 6  | 0  | 0  | 12  |
| Southchurch Rovers                               | 6  | 6  | 0  | 0  | 12  |
| Southend Rovers                                  | 8  | 6  | 2  | 0  | 12  |
| Prittlewell Rom.                                 | 10 | 5  | 3  | 2  | 12  |
| Pitsea Athletic                                  | 9  | 5  | 3  | 1  | 11  |
| Ravleigh United                                  | 10 | 4  | 5  | 1  | 9   |
| *Southend Athletic                               | 6  | 5  | 1  | 0  | 8   |
| *School of Gunnery                               | 7  | 3  | 3  | 1  | 5   |
| Rochford Congregl                                | 9  | 2  | 7  | 0  | 4   |
| Hockley  | 6  | 1  | 5  | 0  | 2   |
| Southend West-ians                               | 9  | 0  | 8  | 1  | 1   |
| Park Rangers                                     | 6  | 0  | 6  | 0  | 0   |
| *Two points deducted for playing ineligible men. |    |    |    |    |     |
| S. C. BRAGG,                                     |    |    |    |    |     |
| Hon. Secretary.                                  |    |    |    |    |     |

*Southend Standard and Essex Weekly Advertiser*

*November 1902*

## SOUTH ESSEX FOOTBALL LEAGUE

The first meeting of the new council will be held at the Langthorne Rooms (headquarters), Broadway, Stratford, on Tuesday, July 14th at 7.15 p.m. Each club is expected to send a representative, the business being of an important character. For the purpose of discussing and if desirable, passing the following resolution, the meeting will at once resolve itself into a special general meeting.

The Hon, Sec. will propose: "That the two lowest clubs in each section of Division I. shall retire at the end of the season etc." "That permission be given the Hon. Sec. to classify the rules of the League And incorporate clause contained in certain rules in the more particular rule to which they refer."

"That the Eastern Section of Div II shall consist of the following clubs:- Gays Amateurs, Heath Park, (Romford), Leigh Ramblers, Pitsea Athletic, Shoeburyness Town, Southchurch Rovers, Southend Athletic A, and Tilbury." The Hon. Sec. will propose (a) That in recognition of the valued services rendered by the League by Mr H. A. Hants, as Chairman of the Council for several years, a gold medal be purchased and suitably inscribed and the same be presented at the next meeting of the League.

(b) That medals be awarded to the runners up in section "B" of Div I. This not to act as a precedent.

*The Eastern Mercury July 7th 1903*

# SOUTH ESSEX FOOTBALL LEAGUE

The first meeting of the new council was held at the Langthorne Rooms, Stratford, on Tuesday. It was agreed that the Eastern section of Division II should consist of Grays Amateurs, Heath Park (Romford), Leigh Ramblers, Pitsea Athletic, Shoeburyness Town, Southchurch Rovers, Southend Athletic A and Tilbury.

*The Eastern Mercury 21st July 1903*

## SOUTH ESSEX LEAGUE

### MATCHES & REFEREES FOR SEPTEMBER

19th Pitsea Athletic v Southchurch Rovers      H. E. Ellis

26th Pitsea Athletic v Southend Athletic "A"      H. J. Smith

*The Eastern Mercury 15th September 1903*

## PROTESTS, ETC

Ernest Martin of Broomfield and W. McDade, of Pitsea Athletic, were suspended till February 1st for misconduct on the field.- Pitsea Athletic Club was cautioned as to the conduct of the spectators.

*The Essex Weekly News Friday November 20th 1903*

## PITSEA ATHLETIC v LEIGH Ramblers

*Essex Weekly News December 1903*

## PITSEA AND VANGE

Mr T B Kirkhope a chemist at the British Explosives Syndicate's work at Pitsea is moving to Cornwell. He is well known locally and has rendered valuable assistance in many ways, while he will, perhaps, be best remembered for his work as Secretary of the Pitsea Athletic Football Club.

*Essex County Chronicle February 12th 1904*

# SOUTH ESSEX LEAGUE

The Eastern Section, Which, by the way, was formed with the sole object of fostering the game in the South - East Essex, Pitsea Athletic and Grays Amateur are retiring.

*Athletic Chat - Tuesday 03 May 1904*

# SOUTH ESSEX LEAGUE

## MATCHES and REFEREES FOR APRIL

16th Heath Park v Pitsea Athletic kick off 4.30 H. G Davey

23rd Pitsea Athletic v Heath Park kick off 4.00 J. W Barrow

*The Eastern Mercury April 12th 1904*

## FRIENDLIES

## Pitsea Athletic v South Ockendon.

Grays & Tilbury Gazette,

Rainham, Hornchurch &amp; Upminster Telegraph.

*Saturday 16th November 1907*

**JUNIOR LEAGUE.**  
West Thurrock Juniors v Purfleet Juniors.  
South Stifford v Melrose.

**FRIENDLIES.**  
Linford v Tilbury Athletic.  
Pitsea Athletic v South Ockendon.

**NEXT WEDNESDAY.**  
Chatham v Grays. Train, 1.33 from Grays.

*Grays & Tilbury Gazette November 1907*

## **PITSEA.**

IN AID of the Athletic Football Club, a capital dance and whist drive were held in the Fairview Hall, on Saturday. Whist results :—Ladies : 1, Mrs. Moss; 2, Mrs. G. Mullender.—Gentlemen : 1, Mr. Hayward; 2, Mr. J. Avery.

*The Essex County Chronical September 1909*

## **JUNIOR CUP**

### **FIRST ROUND**

**PITSEA ATHLETIC v SOUTHMINSTER St LEONARDS**

*The Newsman, Saturday October 1909*

## **BETWEEN THE POSTS**

### **LEAGUE MATCHES**

**Wickford and District League.**

**RETTENDON UNITED 2 v PITSEA UNITED 6**

H Mullender 2, Jones, McDade, King and Roth? Were the scorers.

*Essex weekly news Friday 12th November 1909*

## PITSEA FOOTBALL CLUB'S BALL.

A grand ball and concert were given in the Central Hall, Vange, on Saturday evening, under the auspices of Pitsea Athletic Football Club. Mr Whilling of Vange, acted as M.C. and Messers Turner and Avery each played dance music. Mr C Stock filled in a breach by singing and playing, his rendering of French's comic song "Sarah Scraggs" fairly brought down the house. During an interval in the programme opportunity was taken of making a present to an old member, Mr William Mullinder, who is leaving Pitsea for the United States. He was given a dressing case as a token by his fellow members of the football club. Dancing was continued until midnight.

*Southend Standard and Essex Weekly Advertiser September 1910*

## ESSEX JUNIOR CUP

### First Round

Southminster St Leonards v Pitsea Athletic

To be played on October 15th. Kick off 2.00 pm

*The Woodford Times Friday, September 30th 1910*

## ESSEX JUNIOR CUP

### Second Round

Pitsea Athletic v Billericay

To be played on November 5th Kick off 2.00 pm

*The Woodford Times Friday, September 30th 1910*

## ST ANDREW'S "A" v PITSEA

At Shoebury, result; St Andrews's "A" 3; Pitsea Athletic 0

Shoebury won the toss and Pitsea kicked off. Mid -field play followed. The Saints broke away, and good a centre from E Fisher was converted by C Collis putting the saints one up soon after C Collis again scored. Pitsea broke away and a home goal was called was called upon to punch it away. From the restart Pitsea pressed, but found the Shoebury defence quite safe, E Hollands then scored a third goal for the Saints. End to end played followed, but time was called with the Saints winners of a good game by three goals to none.

*Southend Standard and Essex Weekly Advertiser*

*October 1910*



Last mention of Pitsea Athletic was October 1910 ?

## PITSEA UNITED F.C.



Pitsea United 1914

Readers who saw the photograph of Pitsea United published in our August issue under the heading “Flashback 14 years” may be interested to note that at least one player in that picture taken season 1933 - 34 is also pictured above, some twenty years earlier. Vic Woodward, second from left, second row, is the man, with this long service record.

Reading from left to right the players are,

Top row; J Avery, F Sturgeon, J Rose, W Sweeting, G Sweeting,.

2nd row; E Evelyn, V Woodward, S Harvey, T Bridger, A Hammond,

Bottom row; E Jones, H Jones, S Clarke, T McDade, A Bartlett,

One or two of these like George Sweeting and Ernie Evelyn, were familiar figures around Pitsea.

*From a Programme for Pitsea United FC September 1947*

*Courtesy of Paul Osborne*

## Cup Games.

The following is the draw for the Essex Junior Cup 3rd round to be played .

November 27th, kick off 2.15

Pitsea United v Grays Athletic

*Chelmsford Chronicle November 1920*

## ESSEX JUNIOR CUP

Division IV

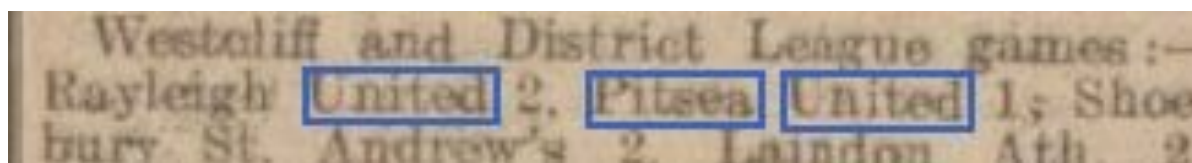
Pitsea United v Wouldham

*Chelmsford Chronicle November 1922*

## WESTCLIFF and DISTRICT LEAGUE GAMES

Pitsea United 1, Westcliff Congregational 1 (the teams remain the only undefeated sides in the first division)

*Chelmsford Chronicle November 1922*



*Chelmsford Chronicle February 1923*

## SOUTHEND and DISTRICT LEAGUE RESULTS

Division 1

Pitsea United 3, Hockley Legion 3

*Chelmsford Chronicle January 1936*

## Pitsea United reformed 1946 - 47 season

| Club Reformed Season 1946-47 |  |
|------------------------------|--|
| 1947-48—                     | Champions Thurrock Comb., Winners Thurrock Cup, Runners-Up Stanford Charity Cup      |
| 1948-49—                     | Runners-Up Thames-side League Div. 1.  |
| 1949-50—                     | Runners-Up Thurrock Comb. League.  |
| 1950-51—                     | Runners-Up Thurrock Comb. League, Thurrock Cup, Thames-side League.                  |
| 1951-52—                     | Champions London League Div. 2. Winners Southend Charity Comp. (Senior Section)      |
| 1952-53—                     | Winners Southend Charity Competition (Senior Section).                               |
| 1953-54—                     | Winners Southend Charity Comp. (Senior Section). Winners Div. Final Essex Junior Cup |
| 1954-55—                     | Winners Div. Final Essex Junior Cup.   |

*This is from a December 1955 Programme*

## FOOTBALL

### NOTES OF THE WEEK

(By "GRAYSONIAN")

### THURROCK COMBINATION

Junior Division Corringham & Fobbing 1 Pitsea 1

| THURROCK COMBINATION               |    |    |    |    |       |    |    |  |  |
|------------------------------------|----|----|----|----|-------|----|----|--|--|
| LEAGUE TABLES                      |    |    |    |    |       |    |    |  |  |
| (Up to and including February 9th) |    |    |    |    |       |    |    |  |  |
| JUNIOR DIVISION                    |    |    |    |    |       |    |    |  |  |
|                                    | P. | W. | D. | L. | Goals |    |    |  |  |
|                                    |    |    |    |    | F.    | A. | P. |  |  |
| Latbol Athletic                    | 13 | 12 | 0  | 1  | 63    | 22 | 24 |  |  |
| Thames-side                        | 14 | 10 | 0  | 4  | 72    | 30 | 20 |  |  |
| Parkside                           | 12 | 8  | 1  | 3  | 62    | 13 | 17 |  |  |
| Royal Engineers                    | 13 | 8  | 0  | 5  | 53    | 33 | 18 |  |  |
| Corringham & F.                    | 12 | 4  | 2  | 6  | 30    | 39 | 10 |  |  |
| Stork                              | 10 | 4  | 2  | 4  | 21    | 32 | 10 |  |  |
| Grays Ath. "B"                     | 12 | 4  | 0  | 8  | 39    | 49 | 8  |  |  |
| Arccright                          | 11 | 3  | 0  | 8  | 21    | 48 | 6  |  |  |
| Pitsea United                      | 10 | 2  | 1  | 7  | 20    | 68 | 5  |  |  |
| Snell Haven                        | 13 | 1  | 2  | 10 | 21    | 68 | 4  |  |  |

Essex Thurrock Gazette February 1946



## PITSEA UNITED GOSSIP

(By Buck)

Freddie Pearce, "A" team goal-keeper, did a good job at short notice, when he cut out the numbers for the "Blues" new shirts.

The sewing on of these numbers was done by Mrs. Whitehead's daughter Win. (wife of committee man George Smith) and a real precision job she did, following up with a combined operation with "Mum", consisting of purchasing, dyeing and making up material for corner flags. What enthusiasm!

Lenny Rogers appears to have found his old form.

Charlie Mount who was to have played for the "Blues" this season is now with Barking Town. Good luck to you Charlie, but "come up and see us sometime."

"Bom" Hammerslag, ex Pitsea Utd. and Tarpots Athletic player has joined the "Blues" as trainer to the "A" team. Keep 'em on their toes, Bom.

Two dozen new towels have been purchased by the club, so that each player is assured of a clean one for his personal use every match.

The "Blues" passed a vote of thanks to the British Legion for the use of their hall (gratis) when a players' general meeting was called last month.

New players signed on last month include Stevie Sims, a sterling full-back; Bobbie Leeks, tenacious half-back and Norman Pegram (Peggy), who played inside and outside left with great success for Wouldham last season.

Donations received last month: E. Gahan £5, G. Borley £1, S. Payne £1, P. Smith £1. Thanks a lot Ted, George Sid and Pat.

As we go to press, the "Blues" are still awaiting the Council's O.K. to go ahead with the erection of the sectional building for dressing rooms.

Make a date at the "Gun Inn" meadow for the "Blues" first round tie. Essex Junior Cup v. "Romford" Elesco on Saturday, October 25th.

September 1947

Courtesy of Paul Osborne

| THURROCK COMB. LEAGUE TABLE                      |    |    |    |    |     |     |      |
|--|----|----|----|----|-----|-----|------|
| <i>Up to and including 20th. September 1947.</i> |    |    |    |    |     |     |      |
|  | P. | W. | D. | L. | For | Ag. | Pts. |
| Pitsea   | 4  | 4  | 0  | 0  | 8   | 2   | 8    |
| Aveley   | 3  | 3  | 0  | 0  | 11  | 2   | 6    |
| Tunnel   | 3  | 2  | 0  | 1  | 19  | 6   | 4    |
| Bata Sports                                      | 3  | 1  | 1  | 1  | 9   | 4   | 3    |
| P.L.A.   | 3  | 1  | 1  | 1  | 12  | 7   | 3    |
| Shell Haven                                      | 2  | 1  | 1  | 0  | 3   | 2   | 3    |
| Corringham & Fobbing                             | 2  | 1  | 0  | 1  | 7   | 2   | 2    |
| Green & Silley Weir                              | 2  | 1  | 0  | 1  | 7   | 7   | 2    |
| Lathol   | 1  | 0  | 1  | 0  | 2   | 2   | 1    |
| Wouldham   | 2  | 0  | 0  | 2  | 3   | 13  | 0    |
| Thameside  | 3  | 0  | 0  | 3  | 2   | 9   | 0    |
| Thames Mills                                     | 4  | 0  | 0  | 4  | 4   | 31  | 0    |
| Orsett   | 0  | 0  | 0  | 0  | 0   | 0   | 0    |

*September 1947*

### PITSEA UNITED FIXTURES for this month

#### Thurrock Combination League

Saturday October 11th, Wouldham v Pitsea Utd (away) k.o. 3.30

Saturday October 18th, open for Southend Charity Cup

Saturday October 25th Pitsea United v Romford Clesco (home) k.o. 3.30

Saturday November 1st Pitsea United v Green & Silley Weir (home) k.o. 3.30

#### Grays Thameside League

Saturday October 4th, Pitsea United "A" v Gaslight (home) k.o. 3.30

Saturday October 11th Open

Saturday October 18th Pitsea United "A" v Linford (league cup)

Saturday October 25th Open

Saturday November 1st Fondu Sports v Pitsea United "A" (away) k.o. 3.30

#### *Note to Supporters::*

When either team is playing away, coaches will leave Pitsea Broadway one hour before advertised kick-off times. Give the lads your support away from home and let the other teams know Pitsea's sporting spirit.

From a Pitsea United F.C. programme September 1947

*Courtesy of Paul Osborne*

## MANOR IMPROVE BUT LOSE AGAIN

Ruislip Manor Reserves 0, Pitsea United 3

London League: West,

Ruislip Manor Reserves suffered their third successive home defeat on Saturday when they went under to Pitsea United by 3 - 0.

Despite the inclusion of James, Harlow, Boyton and Howard, all with first team experience. Manor proved no match for the strong Essex side.

Pitsea open their scoring with a penalty West took the kick twice being given a second chance by the referee after having ballooned the ball over the bar. Pitsea went further ahead after 30 minutes centre forward James scoring with a hard low drive. And Smedley scored the third.

*Uxbridge & West Drayton Gazette September 1951*

1953



LUCKY N<sup>o</sup> 379

# PITSEA UTD. F.C.

LONDON LEAGUE DIV. 1.

THURROCK COMB.

**Gun Inn Ground, Bowers Gifford.**

President : G. R. COE.

Chairman : J. DORRELL.

Hon. Treasurer : F. THOMPSON.

Hon. Sec. G. DORRELL, JUN.,

31, Avondale Road,

Pitsea.

OFFICIAL PROGRAMME

Saturday, Oct. 24th

PRICE 3d.

v. Old Southendians., Southend Charity Comp. (Senior Section) Round 1. K.O. 2.45

## INGERSOLL

**Today's finest  
wrist watch value**

Produced in Great Britain by British labour and skill at a price everyone can afford. Every Ingersoll wrist watch carries the famous Ingersoll

**ALL-IN FREE SERVICE  
GUARANTEE**

—even against accidental breakage!



**D. BELLEFONTAINE**

Watchmaker & Jeweller

55, HIGH ROAD, VANGE

Phone : VANGE 3117.

FOR ...

**Taxi and  
Private  
Hire**

**Telephone:  
Vange 3155**

Prop. W. GEORGE,  
Timberlog Lane.

**At your Service since 1920.**

Club Reformed Season 1946-47.

1947-48—Champions Thurrock Comb., Winners Thurrock Cup, Runners-Up Stanford Charity Cup

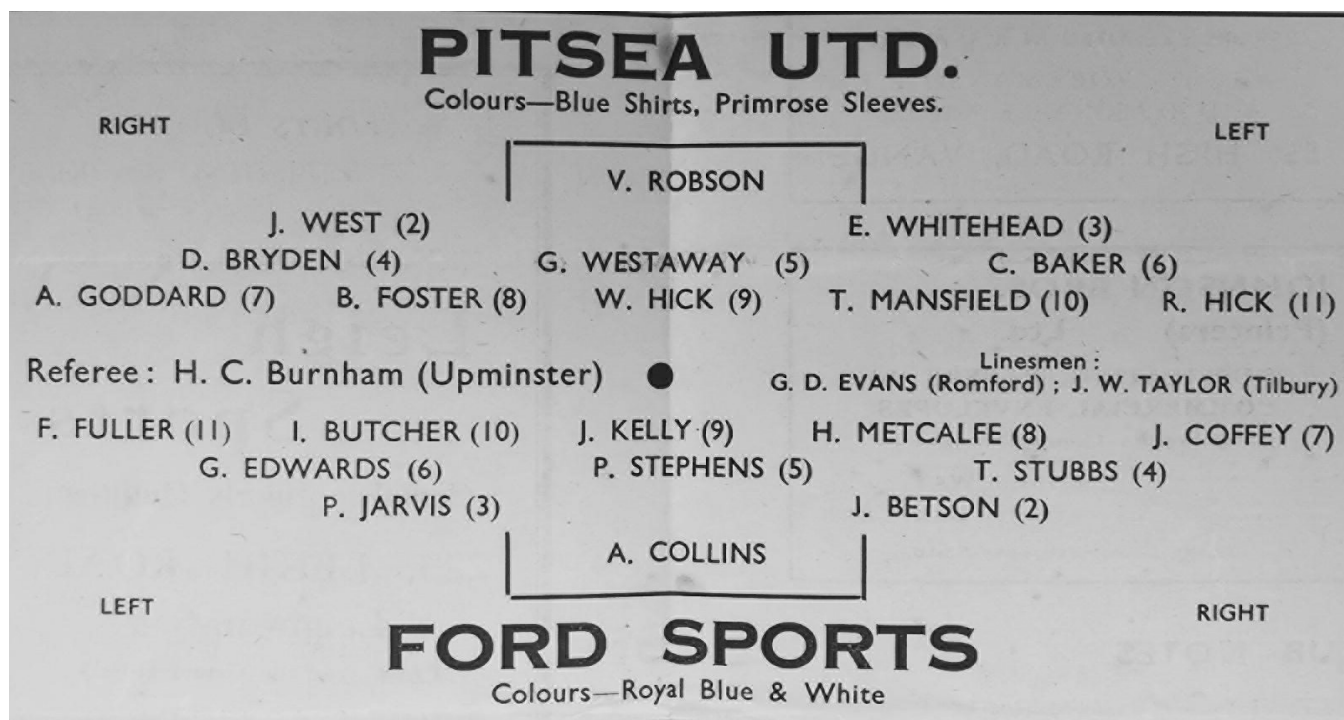
1948-49—Runners-Up Thameside League Div. 1. 1949-50—Runners-Up Thurrock Comb.

1950-51—Runners-Up Thurrock Comb. Thurrock Cup, Thameside League Div. 1.

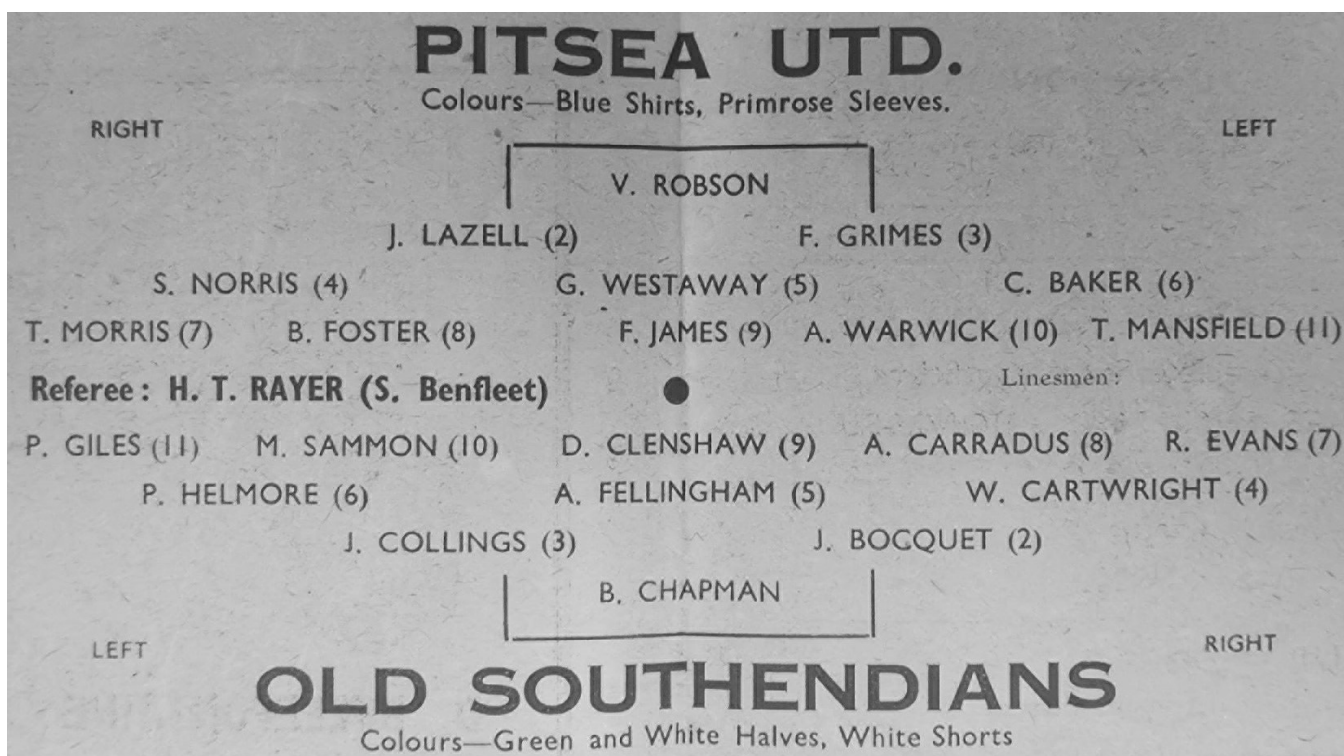
1951-52—Champions London League Div. 2. Winners Southend Charity Comp. (Senior Section)

1952-53—Winners Southend Charity Competition (Senior Section).





About 1952



About 1953





Pitsea United 1953



Armada Sports merged with Pitsea United  
Around 1959.

This badge has their logo on it



# FOOTBALL at the STADIUM

GRAINGER ROAD ————— SOUTHEND-ON-SEA

SOUTHEND CHARITY COMPETITION  
(SENIOR SECTION) FINAL TIE. 1952-1953

## PITSEA UNITED (Holders) v. MONARCHS

TUESDAY, 21st APRIL, 1953.

Kick-off 6.30 p.m.

By kind permission of Southend Stadium Ltd., and Southend Utd., F.C.

### PITSEA UNITED

(Blue and Gold Shirts, White Shorts.)

RIGHT WING

LEFT WING

J. Watson  
1

J. Layzell  
2

P. Monk  
3

S. Norris  
4

G. Westaway  
5

C. Baker  
6

T. Morris  
7

B. Foster  
8

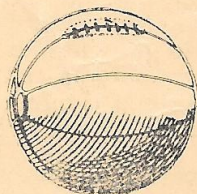
F. James  
9

A. Warwick  
10

N. Pagram  
11

Referee :

Mr. H. RAYER



Linesmen

Mr. R. Quay, (Red Flag)

Mr. M. Key, (Yellow Flag)

S. Bell  
11

H. Vestey  
10

A. Gatlish  
9

D. Hallums  
8

A. Carter  
7

J. Ablett  
6

R. Menzies  
5

A. Sharp  
4

J. Bridge (Capt.)  
3

R. Giles  
2

J. Albon  
1

LEFT WING

RIGHT WING

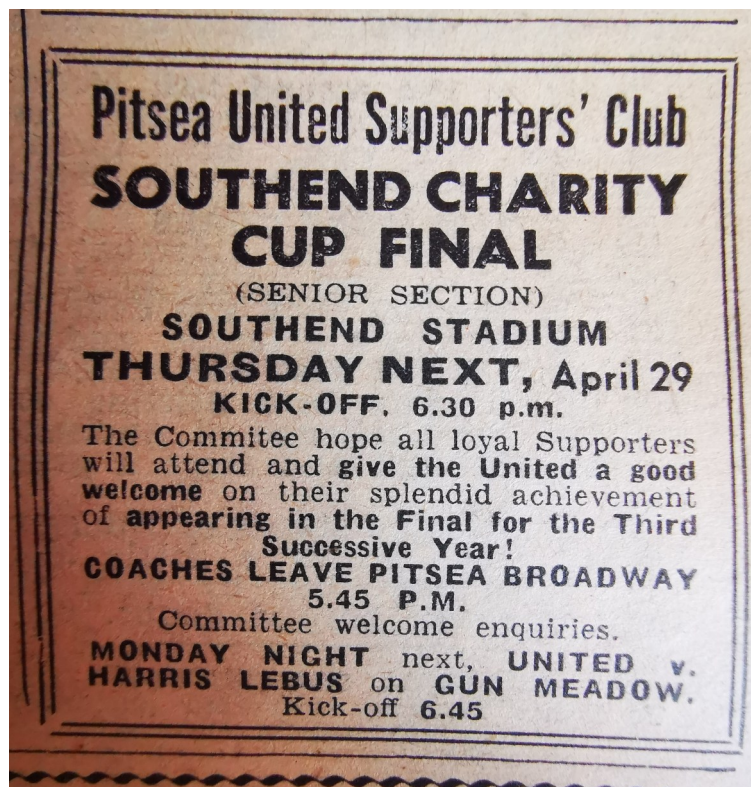
### MONARCHS

(White Jerseys, Black Shorts)

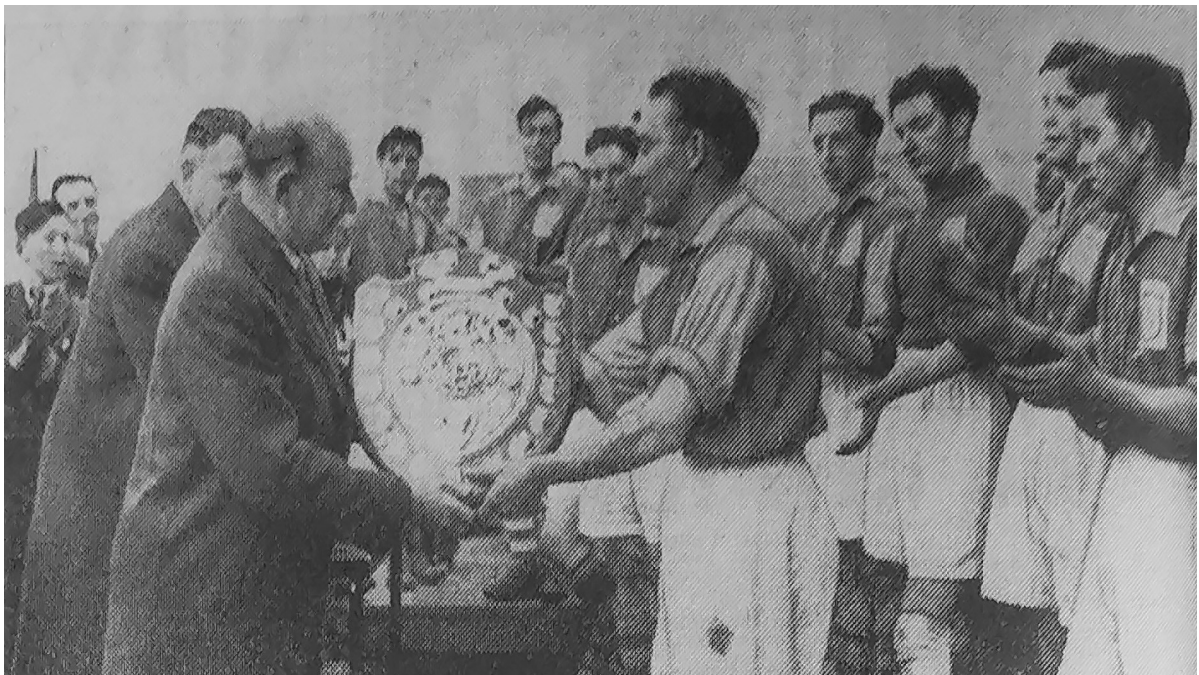
Programme ————— Two Pence

DAVIES & SONS PRINTERS LTD





## PITSEA WIN CHARITY SHIELD FOR THIRD CONSECUTIVE SEASON



The Mayor of Southend (Ald. E.N. Selby, J.P.) hands over the Southend Charity Shield to Pitsea United captain C. Baker at the conclusion of Thursday night final at Southend Stadium.

Pitsea United 1, Corringham and Fobbing 0

A PENALTY goal scored by B Foster in the opening minutes of the game enabled Pitsea United to beat Corringham and Fobbing in the final of the Southend Charity Completion on Thursday Night.

*Basildon Standard 1st May 1954*



# Pitsea United V Beckenham Reserves

★ CAMPING AND HIKING EQUIPMENT ★

**"Kick-off" on the right foot.**  
**We Sell for LESS**

**LONDON LEAGUE (Second Division)**  
**BECKENHAM RES.**  
 Green and White  
**P. Jackson**  
**T. Trinder** 2 **B. Holyoake** 3  
**C. Leech** 4 **C. Roberts** 5 **H. Blizzard** 6  
**T. Tyre** 7 **K. Kingscote** 8 **R. English** 9 **A. Brook** 10 **L. Christie** 11

Referee: J.W. Secular

**MOTORCYCLISTS' PROTECTIVE CLOTHING**

Line: H. W. Ginn  
F. S. Herbert

**R. Hick** 11 **T. Mansfield** 10 **F. James** 9 **B. Foster** 8 **A. Goddard** 7  
**C. Baker** 6 **G. Westaway** 5 **J. Smedley** 4  
**E. Whitehead** 3 **J. West** 2  
**V. Robson**  
**PITSEA UNITED**  
 Blue and Yellow

**Kent House Surplus**  
 208 HIGH STREET, PENCE, S.E.20  
 (opposite Boys' County School)

★ INDUSTRIAL CLOTHING BOOTS ETC ★

Saturday April 1952

# London Football League Tables

(Up to and including April 12th)

| PREMIER DIVISION        |    |    |   |    |    |    |     | SECOND DIVISION        |    |    |   |    |    |    |     |
|-------------------------|----|----|---|----|----|----|-----|------------------------|----|----|---|----|----|----|-----|
|                         | P  | W  | D | L  | F  | A  | PTS |                        | P  | W  | D | L  | F  | A  | PTS |
| West Thurrock...        | 23 | 17 | 3 | 3  | 57 | 30 | 37  | Pitsea United ...      | 20 | 15 | 3 | 2  | 75 | 23 | 33  |
| Ruislip Manor ...       | 22 | 17 | 1 | 4  | 75 | 37 | 35  | Lea Bridge Gas...      | 19 | 10 | 5 | 4  | 47 | 33 | 25  |
| Guildford City ...      | 23 | 12 | 9 | 2  | 59 | 25 | 33  | Storey Athletic ...    | 15 | 11 | 2 | 2  | 37 | 18 | 24  |
| Gravesend & Northfleet  | 24 | 12 | 4 | 8  | 64 | 39 | 28  | Wapping Sports ...     | 15 | 10 | 2 | 3  | 56 | 28 | 22  |
| Crittall Athletic ...   | 21 | 12 | 3 | 6  | 66 | 37 | 27  | Bata Sports ...        | 21 | 8  | 5 | 8  | 49 | 49 | 21  |
| Eton Manor ...          | 25 | 11 | 4 | 10 | 67 | 43 | 26  | Ruislip Manor ...      | 19 | 8  | 4 | 7  | 41 | 39 | 20  |
| Welwyn Garden City...   | 25 | 10 | 5 | 10 | 41 | 44 | 25  | Aylesford Paper Mills  | 21 | 5  | 9 | 7  | 35 | 41 | 19  |
| Dartford ...            | 23 | 9  | 3 | 11 | 36 | 35 | 21  | Welwyn Garden City ..  | 23 | 8  | 3 | 12 | 46 | 65 | 19  |
| Cray Wanderers ...      | 22 | 8  | 3 | 11 | 45 | 60 | 19  | Eton Manor ...         | 23 | 6  | 6 | 11 | 43 | 45 | 18  |
| Leavesden ...           | 25 | 8  | 3 | 14 | 45 | 80 | 19  | BECKENHAM...           | 17 | 7  | 3 | 7  | 42 | 41 | 17  |
| Woolwich Polytechnic... | 22 | 8  | 2 | 12 | 45 | 55 | 18  | Ford Sports ...        | 21 | 5  | 5 | 11 | 36 | 56 | 15  |
| BECKENHAM ...           | 22 | 5  | 8 | 9  | 38 | 53 | 18  | Aveley ...             | 22 | 3  | 7 | 12 | 28 | 53 | 13  |
| Aylesford Paper Mills   | 24 | 6  | 4 | 14 | 45 | 69 | 16  | P.O. Engineers (L.T.R) | 22 | 5  | 2 | 15 | 35 | 79 | 12  |
| P.O. Engineers (L.T.R)  | 23 | 5  | 4 | 14 | 38 | 62 | 14  |                        |    |    |   |    |    |    |     |
| Royal Naval Depot ...   | 22 | 4  | 2 | 16 | 31 | 83 | 10  |                        |    |    |   |    |    |    |     |

|                       | P  | W | D | L | W | D | L | F  | A  | Pts. |
|-----------------------|----|---|---|---|---|---|---|----|----|------|
| Parkhill (Chingford)  | 11 | 4 | 1 | 0 | 4 | 2 | 0 | 36 | 17 | 19   |
| BARKINGS IDE          | 11 | 1 | 3 | 1 | 4 | 1 | 1 | 17 | 12 | 14   |
| Wapping Sports        | 9  | 2 | 1 | 0 | 4 | 0 | 2 | 22 | 10 | 13   |
| Dagenham Cables       | 10 | 2 | 0 | 3 | 3 | 2 | 0 | 23 | 22 | 12   |
| London Trans. Buses   | 9  | 2 | 2 | 2 | 1 | 1 | 1 | 27 | 22 | 9    |
| Harris Lobus          | 12 | 1 | 2 | 2 | 2 | 1 | 4 | 21 | 21 | 9    |
| Bata Sports           | 12 | 2 | 0 | 3 | 2 | 1 | 4 | 20 | 25 | 9    |
| PITSEA UNITED         | 8  | 2 | 1 | 2 | 1 | 1 | 1 | 9  | 15 | 8    |
| Royal Ordnance Facts. | 5  | 0 | 3 | 0 | 2 | 0 | 0 | 12 | 9  | 7    |
| Lathol Athletic       | 9  | 1 | 0 | 3 | 2 | 1 | 2 | 18 | 21 | 7    |
| Stones Athletic       | 10 | 1 | 1 | 4 | 1 | 2 | 1 | 14 | 19 | 7    |
| Dagenham Park         | 9  | 1 | 1 | 1 | 1 | 2 | 3 | 10 | 22 | 7    |
| Stansted              | 9  | 2 | 0 | 4 | 0 | 2 | 1 | 9  | 12 | 6    |
| Port of London Authy. | 8  | 0 | 1 | 4 | 2 | 0 | 1 | 15 | 26 | 5    |

Saturday October 11th 1954

## Soccer club's annual dinner



PITSEA UNITED FOOTBALL CLUB'S eighth annual dinner and dance was held on Friday.

*Basildon Standard 5th June 1954*



Pitsea United's new coach (Mr Dennis Neville) met the players at Gun Meadow on Tuesday.

*Basildon Standard September 1954*





R, Gelder; J, Lazell; P Monk; S, Norris; G, Westaway; C, Baker; T, Morris;  
B, Foster; F, James; A, Warwick; and T, Mansfield.

Players not in order of photo.

January 1954

## Celebrating Victory



The young people had good reason to be happy. They were attending a successful dance by Pitsea United supporter's club at the Gun Inn on Saturday evening. Earlier in afternoon most of the girls had watched the lads bring victory to both Pitsea United teams.

*Basildon Standard 13th March 1954*

## LONDON LEAGUE

Pitsea United 3, Stansted 3

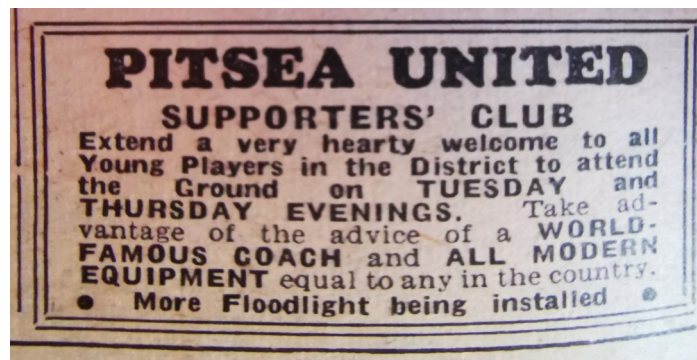
*The Herts and Essex Observer, Friday January 29th 1954*

Much depends on Pitsea defence for Bata Match.

Although below full strength , Pitsea United should take at least one London League point from strong

Bata Sports today (Saturday) at Gun Meadow

*Basildon Standard 1954*



*Basildon Standard September 1954*

JIMMY BARRETT, former England and West Ham United centre-half, is now manager - coach to Pitsea United, the Essex amateur club for whom his son , now filling the inside-left berth for Nottingham Forest played for as a youngster.

*Coventry Evening Telegraph Saturday 22nd January 1955*



# PITSEA UNITED F.C.

LONDON LEAGUE DIVISION 1.  
THURROCK THAMES-SIDE COMB. PREMIER DIVISION  
Gun Inn Ground, Bowers Gifford.

President—E. GAHAN  
Chairman—J. DORRELL  
Hon. Treasurer—G. PERKINS  
7 Church Park Drive,  
Pitsea.

Hon. Team Sec.—J. WEST  
8 Maplin Gardens, Basildon  
Hon. Sec.—G. DORRELL, Jun.,  
31 Avondale Road,  
Pitsea.

---

**OFFICIAL PROGRAMME**

---

**PRICE 3d.**

---



---

#### Club Reformed Season 1946-47

1947-48—Champions Thurrock Comb., Winners Thurrock Cup, Runners-Up Stanford Charity Cup  
1948-49—Runners-Up Thames-side League Div. 1.  
1949-50—Runners-Up Thurrock Comb. League.  
1950-51—Runners-Up Thurrock Comb. League. Thurrock Cup, Thames-side League.  
1951-52—Champions London League Div. 2. Winners Southend Charity Comp. (Senior Section)  
1952-53—Winners Southend Charity Competition (Senior Section).  
1953-54—Winners Southend Charity Comp. (Senior Section). Winners Div. Final Essex Junior Cup  
1954-55—Winners Div. Final Essex Junior Cup.

Pitsea United v Barkingside Saturday 3rd December 1955

The President Edward Gahan was the licensee of the Barge Public House.

*courtesy of T Jefferys*



# CLUB NOTES.

The First Eleven were in good form last Saturday when they defeated Chingford 4 - 1 away, and well deserved their victory. Jock Ingles scored all four goals and must be congratulated on his performance. Unfortunately we cannot field the same Team to-day. Ingles and Baker will not be available. Humphries returns to Centre Forward, and we are hoping that Peter Monk will be available at Left Back.

As will be seen by the League Table shown below, (at present) it is very open, only seven points separating all Teams except the bottom two.

The Reserves have a Local Derby this afternoon as they are visitors to Bowers United in a Thurrock & Thameside Combination game. A hearty welcome to our visitors, Barkingside this afternoon. According to the League Table they are rare away fighters so we can look forward to a hard struggle.

Fixtures for Sat: next. LONDON LEAGUE. K.O. 2.15pm  
10th December. AWAY 1st Eleven V DAGENHAM PARK.  
Reserves:- Not yet known.

SATURDAY 3rd DECEMBER. 1955.

LONDON LEAGUE. K. O. 2.15pm.

PITSEA UNITED. V BARKINGSIDE.

P I T S E A U N I T E D.

Colours:- Royal Blue & Primrose. White Shorts.

Right. J. GRICE. Left.  
(2). (3).  
J. WEST. P. MONK.  
(4). (5). (6).  
D. BRYDEN R. SLAYFORD. R. WATERS.  
(7). (8). (9). (10). (11).  
T. MORRIS. H. BEECH. R. HUMPHRIES. T. WRIGHT. C. MATHEWS.

Referee:- A. S. LAYSON(Southgate). Linesmen :- B. G. STRINGER  
G. R. THOMPSON.

A. PARIS. J. WALKER R. W. INCH. A. WALLACE. R. ENTICKNAP.  
(11). (10). (9). (8). (7).  
H. CLARKE. A. BIGNELL. E. WARD.  
(6). (5). (4).  
B. SHAW. M. STRANGE.  
(3). (2).  
Left. S. V. HOWE. Right.

Colours:- Black & White.

B A R K I N G S I D E.

| LONDON LEAGUE<br>TABLE.<br>Including<br>26th November. |                   | HOME |   |   | AWAY |   |   | F | A  | Pts. |
|--|-------------------|------|---|---|------|---|---|---|----|------|
|  |                   | P    | W | D | L    | W | D | L |    |      |
|  | Barkingside.      | 11   | 2 | 1 | 2    | 4 | 1 | 1 | 29 | 14.  |
|  | Bata Sports.      | 8    | 2 | 1 | 2    | 3 | 0 | 1 | 21 | 12.  |
|  | Wapping Sports.   | 9    | 3 | 0 | 1    | 2 | 1 | 2 | 27 | 13.  |
|  | L. T. Buses.      | 9    | 3 | 1 | 0    | 2 | 0 | 3 | 23 | 11.  |
|  | Cathol Ath.       | 7    | 2 | 1 | 1    | 2 | 1 | 0 | 11 | 7.   |
|  | Chingford.        | 9    | 3 | 2 | 2    | 1 | 0 | 1 | 17 | 15.  |
|  | PITSEA UNITED.    | 8    | 2 | 1 | 2    | 2 | 0 | 1 | 22 | 17.  |
|  | Dagenham Cables.  | 8    | 1 | 1 | 1    | 2 | 1 | 2 | 19 | 23.  |
|  | Port Of London A. | 9    | 1 | 0 | 1    | 2 | 2 | 3 | 14 | 20.  |
|  | Harris Lobus.     | 6    | 2 | 1 | 1    | 1 | 1 | 0 | 13 | 11.  |
|  | R. O. F.          | 9    | 2 | 0 | 3    | 1 | 1 | 2 | 15 | 18.  |
|  | Stones Athletic.  | 8    | 1 | 0 | 3    | 2 | 1 | 1 | 13 | 19.  |
|  | Stansted.         | 9    | 0 | 1 | 3    | 1 | 0 | 4 | 13 | 24.  |
|  | Dagenham Park.    | 10   | 1 | 0 | 4    | 0 | 1 | 4 | 14 | 42.  |

Saturday 3rd December 1955



## PITSEA ELECTED TO PREMIER DIVISION OF THE LONDON LEAGUE

It was a case of third time lucky for Pitsea United Football Club on Wednesday when their third Successive application for promotion to the London League (Premier Division) was accepted at the League's constitutional meeting.

Pitsea's entry into the League with their neighbours, Basildon Town.

In compliance with the League's ruling. Pitsea's Reserve's will say goodbye to Thurrock Thameside Combination football next season to compete in the London League (Reserve Division).

*Basildon Standard May 12th 1956*



The players who turned out in Pitsea United's public trail on Saturday.

*Basildon Standard 18th August 1956*

## Wicks goal puts Pitsea ahead

Pitsea United 3, Beckenham 1

Hats off to Pitsea United. Who acquired their first London League (Premier Division) points by beating Beckenham at Gun Meadow on Saturday. The Blues were the better footballing side and fully deserved victory. In the first half Pitsea kicked against a strong wind and they took some time to settle down.

Cape was put through in the first minute, but he was slow to collect the ball and a good opportunity was lost. Pitsea led at the interval by a goal scored by Wicks in the 39th minute. Mathews sent across a perfect corner kick from the left wing and Wicks headed it home. Just before half-time Beckenham were reduced to 10 men when their half was helped from the field with a sprained ankle. Wicks scored a beautiful goal a terrific left foot shot from 30 yards, six minutes after the restart to put Pitsea two up.

After 11 minutes a good move between Beckford, Morris and Cutting resulted in Cutting's centre being turned into Beckenham's goal by a defender to give Pitsea a three nil lead. Pitsea had a narrow escape shortly afterwards when a shot from Beckenham's outside right beat goal keeper Philips, but right back Foster cleared off the goal-line. In the 20th minute Beckenham reduced arrears. A though ball was given to their centre forward, as Phillips advanced he pushed it past him in to the net.

Pitsea moved straight down field from the kick-off, and Beckenham's goal keeper made a brilliant save from a high shot by Beckford. The Blues were also unlucky 15 minutes from the end, when a 40 yard drive by left back Monk crashed against the cross bar, and just before the end a shot from Mathews hit the post. Foster in his first game for Pitsea and Rodgers were the pick of the defence, and Cutting was again the most impressive forward.

*Basildon Standard September 1st 1956*

## PITSEA DECIDE ON SUNDAY TRAINING SESSIONS

In an effort to improve the club's record this season in both the London League Premier and Reserve Division, Pitsea United are to introduce Sunday morning training. The first session takes place tomorrow at Gun Meadow. Coach Alf Smirk.

*Peter Lucas, Basildon Standard November 1956*

## A BRIEF HISTORY OF THE ESSEX SENIOR FOOTBALL LEAGUE

There was an initial attempt at forming a League in 1937-38. It was called the Essex County League. but it only lasted a season. Another attempt came during the Second World War and finally,

in 1956 if 12 clubs were interested then there could be an Essex Senior League but only six were sure, Pitsea United, Bata Sports, Maldon Town, Heybridge Swifts, Crittall Athletic (now Braintree) and Chingford, with four more thinking about it, Clacton Town, Halstead Town, Stansted and Harris Lebus but on February 8<sup>th</sup> the 12 did not transpire.

### REG MARCH RETURNS AFTER INJURY TO HELP THRASH PITSEA



Basildon Town 9, Pitsea United 0, London League match, at Timberlog Lane, on Boxing Day

*Basildon Standard December 1956*



# PITSEA UNITED F.C.

LONDON LEAGUE SENIOR & RESERVE SECTIONS

Gun Inn Ground, Bowers Gifford

President—A. H. SMITH, Esq.

Team Coach—ALF SMIRK  
7 Cashibury Terrace, Southend-on-Sea

Team Secretary—J. WEST  
8 Maplin Gardens, Basildon. (Basildon 2464)

Chairman—J. DORRELL, Esq.

Hon. Treasurer—G. KIMBER  
78 Rectory Road, Pitsea

Hon. Secretary—G. DORRELL, Jun.  
31 Avondale Road, Pitsea

---

**OFFICIAL PROGRAMME**

**PRICE 2d.**

---



---

#### Club Reformed Season 1946/47

- 1947-48—Champions Thurrock Comb., Winners Thurrock Cup, Runners-up Stanford Charity Cup  
1948-49—Runners-up Thames-side League Div. 1.  
1949-50—Runners-up Thurrock Comb. League.  
1950-51—Runners-up Thurrock Comb. League. Thurrock Cup. Thames-side League.  
1951-52—Champions London League Div. 2. Winners Southend Charity Comp. (Senior Section).  
1952-53—Winners Southend Charity Competition (Senior Section).  
1953-54—Winners Southend Charity Comp. (Senior Sect.). Winners Div. Final Essex Junior Cup.  
1954-55—Winners Div. Final Essex Junior Cup.

Pitsea United v Cray Wanderers Saturday 27th October 1956

*courtesy of T Jefferys*



SATURDAY 27th OCTOBER, 1956.

LONDON LEAGUE CUP.

SENIOR SECTION.

K.O. 2.45pm.

PITSEA UNITED V CRAY WANDERERS.

P I T S E A U N I T E D. (0) 0

Colours:- Royal Blue & Primrose Shirts. White Shorts.

Right.

A. PHILLIPS.

Left.

(2). (3).

H. FOSTER. P. LONK.

(4).

(5).

(6).

W. FOSTER.

D. RODGERS.

A. CUTTING.

(7).

(8).

(9).

(10).

(11).

T. WRIGHT. R. WATERS. J. POSKETT. D. BECKFORD. L. FIELD.

Referee:-

R. E. DUGGAN.

(Chingford).

**BEST REPORTS**

appear every Wednesday in the

**BASILDON**

**RECORDER**

Linesmen:-

J. M. GLOVER.  
(Harold Hill).

P. A. DELANEY.  
(Harold Wood).

R. KNOCK.

B. BEDNELL.

M. RUDDY. ~~A. DENNINGTON~~ K. COLLISHAW. ~~T. DENNINGTON~~ T. DENNINGTON  
(11) (10) (9) (8) (7).

L. BUTTERFILL. C. CROWTHER. K. HOLDAWAY.  
(6) (5) (4).

R. DAVIS. L. RAWLE.  
(3) (2).

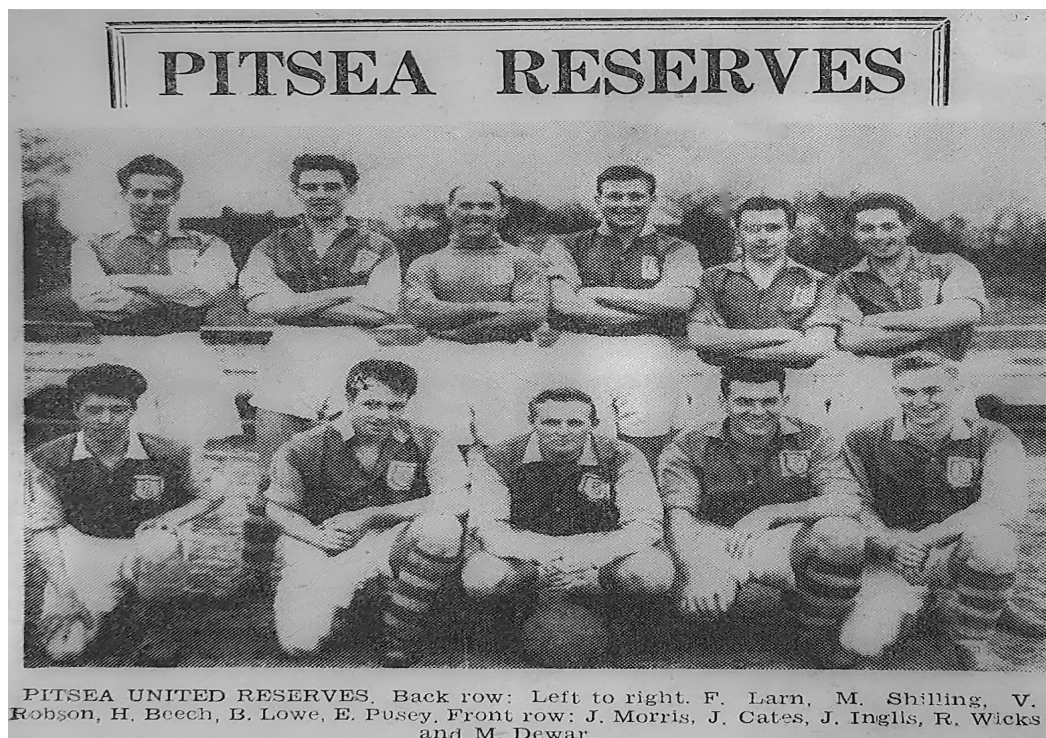
Left.

B. De SALVO.

Right.

Colours:- Black & Amber Shirts. Black Shorts.

C R A Y W A N D E R E R S. (3) 4



*March 1957*

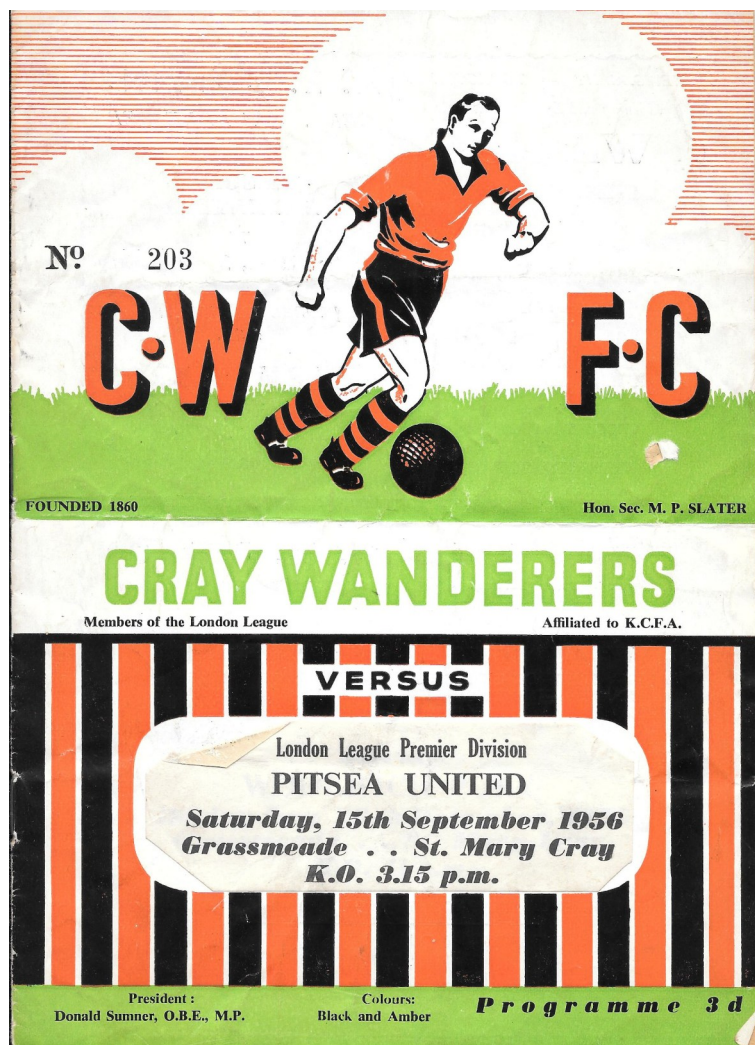
## Pitsea United Football Club



Who are playing in the South - Essex League

*Basildon Standard December 1958*





September 1956 London Premier Division



September 1956 London Premier Division

| PREMIER DIVISION |   |   |   |   |    |    |    | <i>League Tables</i> |   |   |   |   |    |    |    | RESERVE SECTION |  |  |  |  |  |  |  |
|------------------|---|---|---|---|----|----|----|----------------------|---|---|---|---|----|----|----|-----------------|--|--|--|--|--|--|--|
|                  | P | W | D | L | F  | A  | P  |                      | P | W | D | L | F  | A  | P  |                 |  |  |  |  |  |  |  |
| Cheshunt         | 6 | 6 | 0 | 0 | 25 | 9  | 12 | Cray Wands.          | 6 | 5 | 1 | 0 | 32 | 6  | 11 |                 |  |  |  |  |  |  |  |
| Cray Wands.      | 5 | 5 | 0 | 0 | 14 | 5  | 10 | Aveley               | 5 | 5 | 0 | 0 | 17 | 3  | 10 |                 |  |  |  |  |  |  |  |
| Eton Manor       | 5 | 5 | 0 | 0 | 21 | 8  | 10 | East Ham             | 5 | 3 | 2 | 0 | 15 | 7  | 8  |                 |  |  |  |  |  |  |  |
| Basildon         | 6 | 3 | 2 | 1 | 27 | 15 | 8  | Eton Manor           | 6 | 4 | 0 | 2 | 20 | 9  | 8  |                 |  |  |  |  |  |  |  |
| Aveley           | 5 | 2 | 2 | 1 | 12 | 14 | 6  | Basildon             | 6 | 4 | 0 | 2 | 15 | 11 | 8  |                 |  |  |  |  |  |  |  |
| Wingate          | 5 | 2 | 1 | 2 | 13 | 6  | 5  | Ruislip              | 6 | 3 | 0 | 3 | 12 | 9  | 6  |                 |  |  |  |  |  |  |  |
| Chingford        | 6 | 2 | 1 | 3 | 13 | 14 | 5  | Beckenham            | 4 | 2 | 0 | 2 | 12 | 14 | 4  |                 |  |  |  |  |  |  |  |
| Pitsea           | 4 | 2 | 0 | 2 | 5  | 5  | 4  | West Thurrock        | 6 | 1 | 2 | 3 | 8  | 17 | 4  |                 |  |  |  |  |  |  |  |
| Beckenham        | 5 | 2 | 0 | 3 | 14 | 17 | 4  | Epping Town          | 5 | 2 | 0 | 3 | 7  | 14 | 4  |                 |  |  |  |  |  |  |  |
| Epping Town      | 6 | 2 | 0 | 4 | 14 | 22 | 4  | Cheshunt             | 5 | 1 | 1 | 3 | 12 | 11 | 3  |                 |  |  |  |  |  |  |  |
| Harlow           | 6 | 1 | 1 | 4 | 12 | 25 | 3  | Wingate              | 4 | 1 | 1 | 2 | 6  | 11 | 3  |                 |  |  |  |  |  |  |  |
| East Ham         | 4 | 1 | 0 | 3 | 4  | 8  | 2  | Chingford            | 5 | 1 | 1 | 3 | 7  | 17 | 3  |                 |  |  |  |  |  |  |  |
| Ruislip Manor    | 6 | 0 | 2 | 4 | 10 | 18 | 2  | Harlow Town          | 5 | 1 | 1 | 3 | 9  | 26 | 3  |                 |  |  |  |  |  |  |  |
| West Thurrock    | 5 | 1 | 0 | 4 | 7  | 18 | 2  | Pitsea Utd.          | 5 | 0 | 1 | 4 | 5  | 18 | 1  |                 |  |  |  |  |  |  |  |
| Barkingside      | 3 | 0 | 1 | 2 | 4  | 8  | 1  | Barkingside          | 2 | 0 | 0 | 2 | 3  | 6  | 0  |                 |  |  |  |  |  |  |  |

## PITSEA PENALTY SHARE OF POINTS

### PITSEA UNITED 2 BARKING SIDE 2

In their 25th London League (Senior Division) game of the season, Pitsea United at last succeeded in sharing the points their fist draw in the whole of this season's cup and league campaign.

Phillips; Foster; Monk; Ullathorne; Poskett; Waters; Wright; Gree; Inglis; Hilditch and Field.

*Basildon Recorder 13th March 1957*

## PITSEA HAVE ALAN PHILLIPS BACK FOR MATCH WITH BASILDON

Home on leave from the army, goalkeeper Alan Phillips will strengthen Pitsea United for their London League local Derby with Basildon Town at Gun Meadow on Monday (3.15). Basildon Town have a doubt about the fitness of inside - right Jimmy Alsford, who pulled a muscle at Barkingside last week. The match will be the fourth London League clash between the two teams who drew 3 - 3 at Timberlog Lane earlier in the season. Last season, Basildon won both League matches and also beat Pitsea in the Stanford Charity competition.

Pitsea United: Phillips. A. N . Other, Dewar, Baker, Hollinsworth, Beech, Gates,  
Watson, Austin, Wicks, Lowe.

*Basildon Standard April 1958*

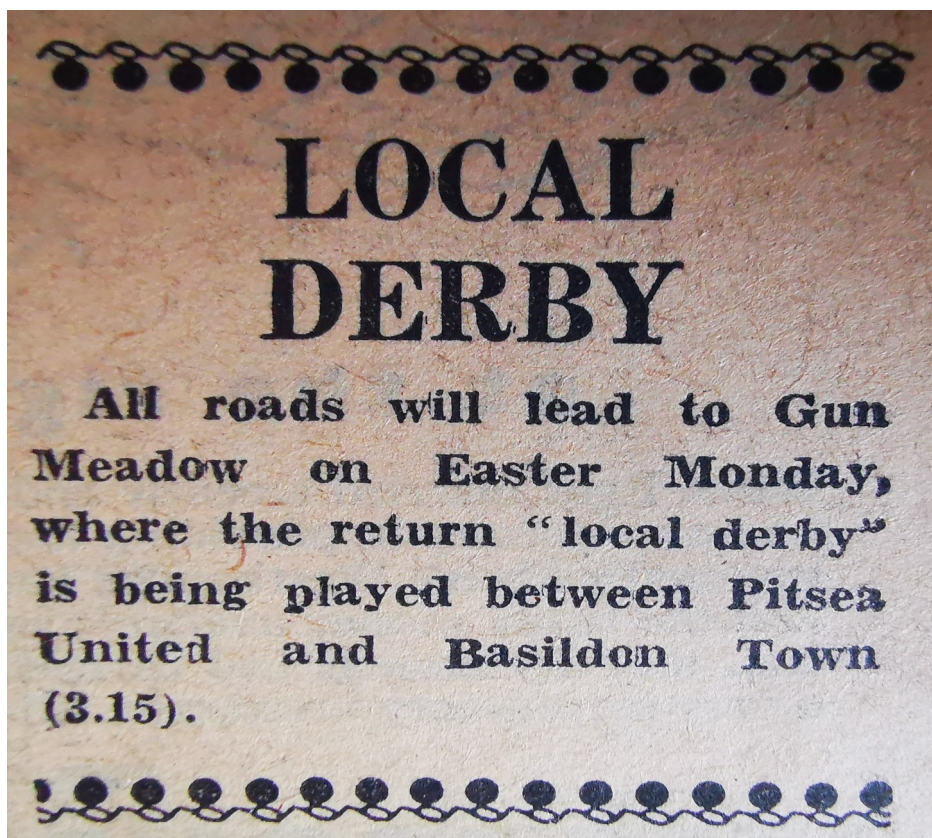
### Pitsea players meet new coach



New Pitsea coach Bill Morgan chats with some of the players before the training started at the Gun Meadow on Monday.

Fourteen players attended the first session.

*Basildon Standard 19th July 1958*



*Basildon Recorder April 1957*

## BASILDON DOUBLE OVER PITSEA

Pitsea United 0 Basildon Town 3

The second leg of the London League derby between the New Town teams was played at Gun Meadow on Monday in cricket weather before the largest crowd of the season.

Pitsea: Phillips, Foster, Monk, Shilling, Poskett, Waters, Inglis, Ullathorne,

Hillditch, Green and Field.

*Basildon Recorder 24th April 1957*





Pitsea United Basildon Standard September 1958



Pitsea United F.C. who this season are playing in the South- Essex League

*Basildon Standard December 20th 1958*

# SPORTING POSTBAG

## ★ PITSEA UNITED

ON behalf of the Pitsea United Football Club I feel I must reply to the criticisms which Mr. Cox made last week. There are a few points I would like to mention concerning his letter.

(1) If he was so concerned regarding Pitsea United entering the League of which he is President, why didn't he attend the public meeting and put his point of view there, instead of criticising the decisions after they had been made?

(2) How does Mr. Cox obtain his information regarding the finances of the club? I would like to put him in the picture. Our club, whilst not wealthy, is definitely not in dire circumstances, as he would appear to think, and also we have many assets.

(3) Our Chairman and Secretary resigned because they felt that the time had come for them to have a break from the constant work necessary when on a football committee, and not because of any disagreement, as was reported in the "Standard" the previous week.

(4) We had good support when we were a winning team in the London League and I feel sure we will regain that old support.

(5) As far as the travelling is concerned, I suggest to Mr. Cox that he checks his facts. The teams farthest away will take possibly an hour to reach by coach, and we have travelled as much as 2½ hours in the London League.

Our players and officials and some members of the public agreed that we should join the South Essex League and try to put Pitsea United back in their previous high position, and as far as we are concerned the matter is closed.

In closing, I only hope that I have answered Mr. Cox's queries to his satisfaction. — F. S. IZZARD  
(Hon. Gen. Secretary).

June 1958



# WILL BASILDON HAVE ONE SENIOR

## SOCCER CLUB ?

Officials of the two existing senior soccer clubs in the area Basildon Town and Pitsea United - met on Friday week to discuss the possibility of a new senior soccer club for Basildon New Town. They agreed that the only way to ensure provision of first class amateur football in Basildon in the future would be to pool resources at the end of the season and to form a new senior club in the New Town.

Recommendations made at the meeting regarding the formation of the new club will be put before a combined meeting of officers, committees and players of both clubs, on Tuesday May 6th.

There was general agreement at the meeting that a merger of the two clubs would be in the interest of senior football in Basildon. Delegates from both clubs expressed the view that support was insufficient to continue organising two senior soccer clubs in the New Town.

## A FINE THING

Mr J Sheppard (President of Basildon Town F. C.) said the amalgamation would be a fine thing for football in Basildon. With two grounds available, the new club would be able to run several teams, from a minor eleven to a senior side, and in a few years time a steady flow of players through the teams would be available.

Financially, he said, amalgamation would suit both existing clubs, as support of business-men in Basildon would no longer be divided between two units, both working for the same purpose.

Mr Jack Dorrell (Chairman of Pitsea United) said his committee wanted more than simply a merger. They wanted all resources of both existing clubs ploughed into the formation of a completely new senior soccer club in the New Town.

## Ground Problem

One of the most controversial items discussed at the meeting was the choice of ground for premier matches of the new town club was formed. Basildon Town Treasurer (Mr M Lake) considered that figures over the last two or three seasons would give the clubs some indication as to the best ground to use from the point of view of support.

Mr Geoff Dorrell (Pitsea United) said it should be the aim of the new club to play senior matches on a ground in the Town Centre area when it became available. He proposed that in the interim period, the new club should use the Gun Meadow ground. He said both existing grounds needed attention to bring them up to the required standard, and it would be wise to spend the money on a ground which would be always be in the possession of the club rather one which be ploughed up after two or three seasons.

## RECOMMENDATIONS

Next week's combined meeting will be asked to consider four recommendations if the decision to form the new club is made. They are:

(1) That the name of the new club should include part of the existing names of Pitsea United and Basildon Town F. C. or that neither should be used.

## RECOMMENDATIONS cont,

- (2) That the club's colours be a merger of the blue of Pitsea United and the white of Basildon Town.
- (3) That the new club should organise four teams; a senior eleven, reserve eleven, "A" team, and minor team.
- (4) That Gun Meadow Pitsea, be used for premier division matches until an alternative ground in the Town Centre area becomes available.

*Basildon Standard May 1958*

## NUNN'S SUCCESSFUL DEBUT FOR PITSEA

### Ongar 2, Pitsea United 3

Recently returned from New Zealand J Nunn made his debut for Pitsea United in this South Essex League match at Ongar on Saturday. At centre - half he held a tight grip on the middle of the field and helped Pitsea through to a well-earned victory. Pitsea always looked in control of the match, but they tended to overcrowd in front of goal in their eagerness to find the back of the net.

After 8 minutes Pitsea went ahead when Wicks, who was put away by Lazell, gave Beech the opportunity to net. Soon afterwards Ongar's out-side-right raced away to equalise with a well-taken shot just out of Readers reach. Pitsea went ahead from a penalty taken by Lowe in the 20th minute and were well on top, shots from Heyday and Cates being on the target with out finding the net.

Ongar took advantage of a bad back pass to level the scores after 25 minutes, but Lowe, after a clever move by Wicks, put the visitors ahead again. Pitsea remained on top in the second half, but inconsistent shootings and a flow missed chances prevented further goals. Beech nicely placed, crashed the ball against the bar, but hard as Pitsea tried no further goals came.

*Basildon Standard October 1958*

## LONDON LEAGUE

Pitsea United football club, who were "dropped" from the London League at the end of last season, have made application for re-election for 1959 - 1960 season. The decision to re-apply was made at the United's last committee meeting before Easter.

When Pitsea were turned down by the London League last season the excuse that they were not strong enough was given. It put the Blues on the spot as far as finding a competition was concerned. But they eventually found refuge in the South Essex League, in which both their first and reserves teams have been competing this season. A spokesman of the club told me this week. We feel this one season out of senior football has given us the chance to build up our financial resources and we believe we are now ready to step into the top grade again.

*Basildon Standard April 1959*

In 1959 Armada Sports merged with London League club Pitsea United, with Pitsea United effectively absorbing Armada Sports. However, Armada Sports later split from Pitsea United and were renamed Basildon United in 1967. The club joined the Thurrock Thames-side .

Notes Amada Football Club: Disbanded in an amalgamation with Pitsea United in 1959.

*Basildon Standard June 1964*

## NO SENIOR SOCCER - SO GATE RECEIPTS ARE HALVED

Without the attraction for senior football at the Gun Meadow, Bowers Gifford, last season Pitsea United Football Club's gate receipts dropped to £37.00, compared with £77. the previous season, it was disclosed at the club's annual meeting on Monday.

But apart from this item the club had a highly successful season financially,,,. Income reached the mammoth total of £935.11s 6d, and although expenditure was heavy, too the club finished the season with a balance of £67 15s 9d.

Also during the year a loss of £38 10s, from the pervious season was wiped out. Money raised by competitions brought in £634. 11s 6d, compared with £125. the previous year, and gifts went up from £77 to £136. Subscriptions from committee members raised another £52.

Largest item of expenditure was £207 8s 7d for equipment and ground maintenance, while £171 was spent on hiring transport for away games. Referees and officials, fees amounted to \$43 and laundering of playing gear cost £43.

The retiring Chairman, Councillor, H Pembroke, said the club's first season in the South Essex League had not been a huge success, but the teams had not done to badly.

From Mr D Price (secretary) report: Seventy players registered for the club during the season, in which the first team finished fifth in the League and the second team midway down the table. He congratulated the reserves on their magnificent run in the Essex Junior cup, which took them to the Divisional final.

Also he praised the work of Harry Brand as Team Secretary, Johnny Ager as grounds man and Charlie Pasco for his work on the gate.

Mr Price said a black mark for the was the fact that four players were reported to the F.A. during the season..

*Basildon Standard June 1959*



## PITSEA FAIL IN BID TO REGAIN SENIOR STATUS

Pitsea United's attempt to regain the senior status they lost last year has been unsuccessful, Mr H White, Essex County Football Association representative, disclosed at the Club's first annual dinner and dance for four years at the Gun Inn, Bowers Gifford on Friday.

Mr White, who was proposing the toast to the club, said the County Association felt that Pitsea were not

quite the force they used to be, but he urged them to apply for entry into the senior ranks again next season, by which time there was a chance they could be back to their old strength.

By applying for senior status the Club had shown they were determined to get to the top again and be the force they were in South - East Essex four years ago, when the team earned high respect in the Southend Charity Combination.

Mr J Lazell, last season's first team captain, said the majority of the players did not pull their weight for the side. If they had given their full backing to the Club their final position in the South Essex League.

*Basildon Standard May 1959*

## South Essex League match at the Gun Meadow

### BLUES MISS TWO PENALTIES BUT BAG THEIR FIRST POINTS

Pitsea United missed chances after chance, including two penalties, in this South Essex League match at the Gun Meadow on Saturday, but were still able to claim both points their first of the season. If all the Blues scoring chances had been accepted, the score would have reached double figures.

From the start Pitsea controlled the play.

*September 1959*



Armada Sports merged with Pitsea United  
Around 1959.

This badge has their logo on it

Amada Football Club: Disbanded in an amalgamation  
with Pitsea United in 1959.

*Basildon Standard June 1964*

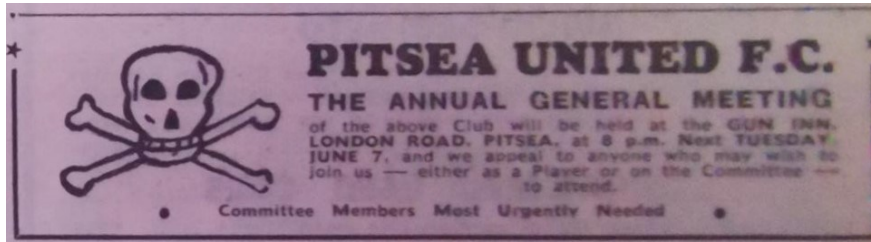


George Watson 4th from left, Jimmy Laver and Frank Thorogood.

Holding the shield Mid 1960

Front row with 4 on shorts Brian Creber?, Dougie Prentice, Back row Albert Gay  
 Frank Thorogood has added Micky Flack goal keeper, Tony Holden centre forward (3rd  
 from Right) and Jonny Hayes on his left shoulder, Keith Sadler next to Jimmy Layer.

*(With thanks to Mike Carr)*



*Basildon Standard June 1960*



Pitsea United's new signings  
Brian Humpage (left) and  
Peter Brokenshire

*Basildon Standard September 1960*

Pitsea United who this year have three teams in the Thurrock Thameside Combination, started training at the new look "Gun Meadow" on Tuesday night, but holidays ect kept the attendance down to about 14 players.

Until the return of coach Bob Sussex, the Fryerns Grammer School physical education master. From the holidays in September the Blues are being coached by Peter Watson, the Southend United's centre half.

The Gun Meadow ground is looking in tip top shape. The bare patches have been by being re-turfed and any day now a roller will arrive to put the finishing touch to the surface.

## LEAGUE CHALLENGE BY 'ELEVENTH HOUR' PITSEA

### Bowers United 2, Pitsea United 4

Pitsea United pulled off their greatest win of the season on Saturday when they beat Bowers United, present leaders of the Thurrock Thameside Combination League, at Railway Meadow Pitsea. Bowers went ahead via inside-right Morris. And Sussex equalised for Pitsea, within two minutes they went ahead when a shot from right-half Beech was deflected into the net by a defender. Pitsea went into a 3-1 lead when a corner-kick by Brian Lowe went straight into the net, despite efforts by Parks whose head merely helped the ball on it's way. Five minutes later a drive by right-winger Bates from 40 yards completely deceived goal keeper Gray.

*Basildon Standard March 1961*

## LOCAL DERBY DRAWN

### PITSEA UNITED 1, BOWERS UNITED 1

Pitsea United drew with local rivals Bower United in a thrilling Thurrock Thameside Combination League battle (Premier Division) at the Gun Meadow on Saturday.

From the start Bowers Utd gave Pitsea a hard Time defending their goal Bowers right-half

Allan was prominent in these attacks while Bob Sussex played well for Pitsea. Bowers took the lead when centre-forward J Feltham scored. 27minutes into the second half Pitsea's Chapman scored the equaliser.

*Basildon Recorder December 1961*



## PITSEA UNLUCKY

### Pitsea United 3, P.L.A. 4

Good football was seen at Gun Meadow on Saturday when Pitsea United were beaten by visiting team Port of London Authority in a Thurrock Thames-side Premier Division game.

Gavin, Allan (new signing) DE Bond, Sussex, Lowe,

*Basildon Recorder October 1961*

## TEAMS ENTER

The following teams have entered for the Victoria Sports Trophy: Pitsea United, Laindon United, Laindon Athletic, Basildon West End, Basildon C.A Minors, Pitsea British Legion, Wickford United, Manor United, Bowers United, Teleflex and Fryerns Area.

*Basildon Recorder March 1962*

### Basildon Sunday League review

#### TWO PLAYERS SENT OFF AT PITSEA

Pitsea United 6 Sorrento 7

Pitsea's Henry Beech and Sorrento's Ken Blockley were sent off by the referee in this thrill a minute needle Basildon Sunday League match at Pitsea on Sunday, which produced 13 goals.

Basildon Standard April 6th 1963

| BASILDON SUNDAY<br>FOOTBALL LEAGUE |    |    |   |    |    |    |    |
|------------------------------------|----|----|---|----|----|----|----|
|                                    | P  | W  | D | L  | F  | A  | P  |
| Sorrento .....                     | 15 | 13 | 1 | 1  | 74 | 35 | 27 |
| Bonallack's .....                  | 14 | 10 | 1 | 3  | 74 | 27 | 21 |
| Pegasus .....                      | 14 | 10 | 0 | 4  | 68 | 39 | 20 |
| Pitsea United ...                  | 15 | 9  | 0 | 6  | 73 | 42 | 18 |
| A.M.E.C.O .....                    | 14 | 7  | 1 | 6  | 43 | 39 | 15 |
| Shell .....                        | 15 | 5  | 1 | 9  | 37 | 65 | 11 |
| Priors Ath. ....                   | 13 | 5  | 0 | 8  | 42 | 46 | 10 |
| Ghyllgrove .....                   | 13 | 4  | 1 | 8  | 35 | 52 | 9  |
| G.P.O. ....                        | 14 | 4  | 1 | 9  | 35 | 60 | 9  |
| T.E.C. ....                        | 15 | 1  | 0 | 14 | 22 | 98 | 2  |

**Soccer Review** - Leading the goal scoring chart with Pitsea United is Bob Giles with eight goals, four of which were scored in one game. Second team centre- forward Len Chapman has notched 7, Henry Beech six, Keith Sadler five, Bill Allen five and Pavitt and Hall four each.

Big date ahead in the Thurrock Thameside Combination Cup match against local rivals

Bowers United (the holders)

*Basildon Standard February 1963*

## PITSEA UNITED TO JOIN DISTRICT LEAGUE

Pitsea United Football Club are going back next season where they started many seasons ago- into the Southend and District League. This was one of the disclosures made at the club's annual meeting on Tuesday, when the secrecy which has shrouded their intentions recently was lifted. It was also announced that the club's Saturday and Sunday sections are amalgamating for the new season to form one big committee and that only two Saturday sides will be run instead of three. The Sunday team will continue to play in the Basildon Sunday League. At the end of the meeting the Sunday section chairman Jack Dorrell, who has been with the club since it reformed after the war appealed to players and committee to give 100 percent to the "new club".

Resignations were received from Peter Brokenshire (secretary) and committee men George Bushnell and Colin Rouse, Peter War (Assistant Secretary) and Rex Clarke (Treasurer) were not re-elected.

The Vice Presidents list was also severely pruned. Among those not re-elected were Roger Handley, Ray Warr, A Warr, Fred Thompson, R Sussex and H Howlett. Wally Newman stepped in as Secretary.

The old faces remaining on the committee include Chairman Johnny Layzell, Vice Chairman Fred Saville and match Secretary Derek Price.

**Top Scorer** - Len Chapman topped the goal scoring chart with 17, Bill Allen and Henry Beech were second with 12 and Keith Sadler scored 11.

Only one player Johnny Agar played in all matches, and he was later presented with the club's "player of the year" cup by life member Mrs Dorrell.

Elected were, President, W King, Patrons, A Sharpe and G Sheridan: Chairman, J Layzell;; Vice Chairman, F Saville; General Secretary, K Reeve

*Peter Lucas Basildon Standard June 1963*



## WEEK-END SOCCER MATCHES AGAIN DOUBTFUL

### Thurrock Thameside Combination Cup

Pitsea United (at home to Stifford Clays); Wood, Anderson, Roberts, Beech, Savill, Ager, Johnson, Sadler, Pavitt, West, Mackenzie.

Pitsea United Reserves (away to Canvey) , Cup - k. o 2pm, Smith, Bell, Brokenshire, Sapsford, Taylor, De Bond, Hall, Chapman, Pit, Allen, Giles.

Pitsea United III (at home to Horndon); Phipps, Kershaw, Foord, Hatton, R Coulson, Hyde, P Gutteridge, Sussex, S Coulson, Norris, Trussler.

*Basildon Standard February 1963*

### GILES LEADS

Leading the goalscoring chart with Pitsea United is Bob Giles with eight goals four of which were scored in one game.

*Basildon Standard February 1963*

## Bright sunshine but some games still in doubt

Two of the grounds where doubt still existed late in the week are the Gun Meadows, Pitsea, and Burnt Mill Road, Basildon., where two important cup games are due to be played.

At the Gun, Pitsea United are due to entertain neighbours Bowers Gifford in the long overdue Thurrock Thameside Combination Cup Match. And Fryerns Boys Club and Fairbarin House (WestHam) in the third Round of the Essex Andrews Cup.

Pitsea United: (at home) to Bowers United - Cup; Woods, Anderson, Roberts, Beech, Saville, Ager, Johnson, Sadler, Pavitt, Westley, Mackenzie.

Pitsea United Reserves: (away to Canvey) Smith, Bell, Brokenshaw, Sapsford, Taylor, K De Bond, (forwards from) Hall, Chapman, Pitt, Allen, Giles, Beck.

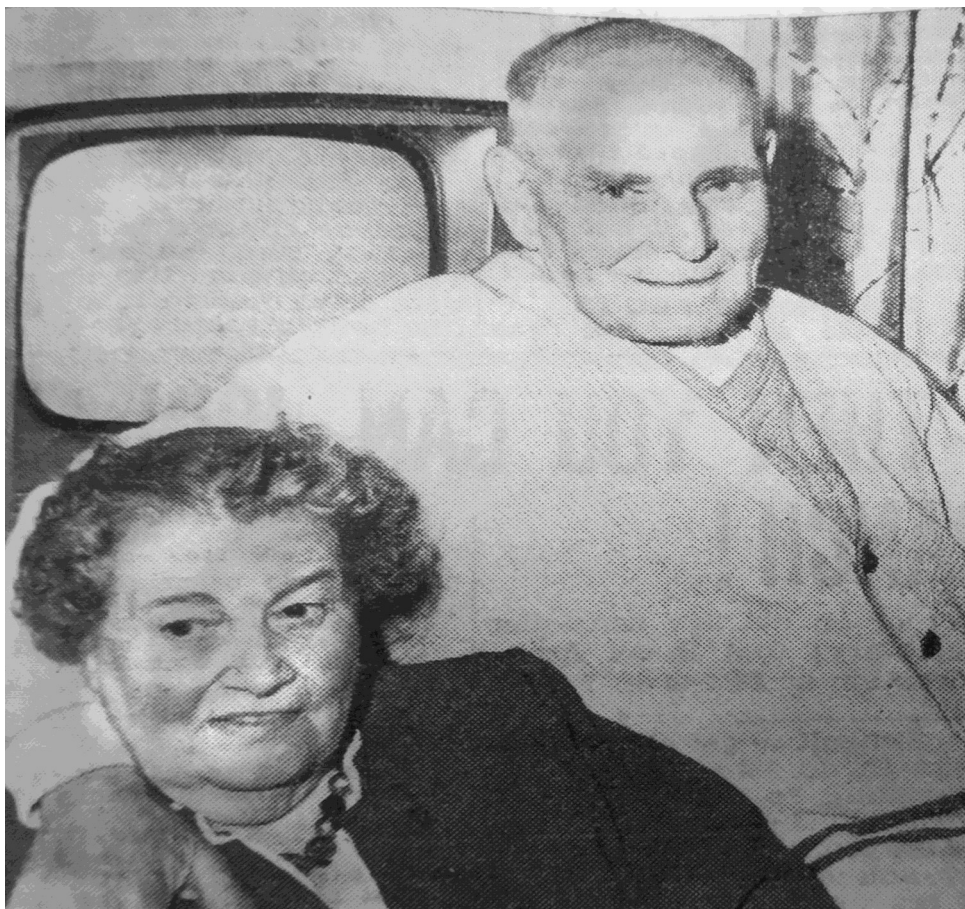
*Basildon Recorder March 1963*



George Borley moved to Vange in 1930 and soon became a member of Pitsea United. As a forward he had a big hand in Pitsea's Southend Charity Competition success in 1935, scoring a goal and making the winner in the final. One of George's cherished memories of his pre war days with Pitsea is the time they went though the season unbeaten, with 17 wins and five draws.

In 1939 George followed most of his team mates into the army, but six years later he was back again with Pitsea United, being elected a member of the committee that re-formed the club after the war.

*January 1963 Basildon Standard.*



Mr and Mrs H Mullender 76 was a founder member of Pitsea United and played for them. "The present team wouldn't have beat the old team I used to play for," We used to have twice the go they've got

*Basildon Standard October 1963*



## PITSEA TO REGAIN OLD GLORY?

Century old Pitsea United are all set to start their first season in the Southend and District League after an absence of 30 years.

*Basildon Standard 17th August 1963.*

## AMATEUR SOCCER TEAMS FOR SATURDAY

PITSEA UNITED (at home to Rayleigh Amateurs); Phipps, Sapford, Brockenshire, Beech, Bromage, Ager, Johnson, Creber, Chapman, Sadler, Jackson.

PITSEA UNITED RES (away to Basildon Town, friendly) Colson, Saville, Crotch, Bettell, Bettis, King, Cates, Read, Austin, Johns, Marriott.

*Basildon Standard November 1963*

## Pitsea go through after extra time at Rayleigh

Rayleigh Town 1, Pitsea United 2

*Basildon Standard 2nd November 1963*

## PITSEA APPEAL TO FOOTBALL ASSOCIATION

Pitsea United Football Club are appealing to the Football Association over the fine of £5 5s imposed on the club recently by an Essex County F.A Commission.

The commission sat to investigate the abandonment by the referee of Pitsea's Southend and District League match with Essex Carriers some weeks ago. They fined Pitsea £5 5s and their linesman Mr Jack Dorrell £1 1s and suspended Henry Beech for 28 days. Two other Pitsea players, Brian Creber and Peter Sadler, were given cautions and an Essex Carriers player was fined 10s 5d.

Pitsea were dissatisfied with the commission's findings and decided to appeal to the Football Association. In the absence of Club Chairman Mr John Lazell who is ill, a club official told me this week, We think the decision to penalise our club so much was all wrong.

*Peter Lucas Basildon Standard March 1964*

## MERGER TALKS BETWEEN TWO SENIOR SOCCER CLUBS



A FIRST-CLASS senior football team for Basildon within five years is the aim of a dramatic merger being planned in the New Town between Basildon Town F.C. And Pitsea United, writes Peter Lucas. The merger the biggest thing to happen In Basildon took a step forward on Tuesday when representatives from both clubs met at the Gun Inn, Pitsea, and agreed on all points. These will now be put before the two clubs at their annual meetings shortly.

The main points agreed at the meeting for presentation to the two club's annual meetings were,

NAME: Basildon Town & Pitsea United F.C.

Ground Gun Meadow, Pitsea.

Colours; Saturday team ; White and Black, (Basildon's Colours),

Reserve strip, Blue and Primrose (Pitsea's colours).

Sunday Team Blue and Primrose;

Reserve strip White and Black.

League; Southend and District League Premier Division.

Meeting to elect officers; Monday May 25th

No decision was taken over the number of teams to be fielded by the club next season, but it seems almost certain that it will be two Saturday teams and one Sunday team.

*Basildon Standard May 1964*



First picture of the committee of the newly-formed Basildon and Pitsea Football club.

Back row; coach Mr Frank Preston, President Mr Will King, Assistant Secretary Mr Dereck Price, Front row; Treasurer Mr George Kimber, Chairman Mr John Lazell, Secretary Mr Bert Handley.

## NO VOTES AGAINST THE BASILDON AND PITSEA MERGER

Basildon and Pitsea United Football Clubs merged on Monday, **but Pitsea United's Sunday team was left out of the deal.** Although the two Saturday club's now come under one heading- Basildon and Pitsea F.C. - the future of the Sunday club is undecided.

The status of Pitsea's Sunday team was queried early in the meeting- before the merger was agreed- by Mr Frank Presland.

The funds of the Saturday and Sunday clubs were together answered Pitsea's chairman Mr John Lazell, but their registrations were separate. Mr W Cage could see no point in not merging the Sunday club, but the Basildon Secretary, Mr Bert Handley, thought the decision should be left to the Sunday club officers. "I am quite happy for us to be only associated with the Saturday Club and for the Sunday club to go it alone," he said "I think this is the only way we can go ahead, but the job of deciding should be left to the officers".

*Basildon Standard May 1964*



## Basildon United F.C.

Basildon United's roots go back to 1955, when a club named Armada Sports was formed, joining Division One of the Southend & District League. In 1959 Armada Sports merged with London League club Pitsea United, with Pitsea United effectively absorbing Armada Sports. However, Armada Sports later split from Pitsea United and were renamed Basildon United in 1967. The club joined the Thurrock Thames-side.

## Basildon Town F.C.

In 1964, the club merged with Pitsea United to form Basildon & Pitsea, becoming founder members of the Essex Olympian League in 1966. Two years later, the club reconstituted back to Basildon Town. During the 1970s, Basildon Town played in the Basildon & District League and Southend & District League, before re-joining the Essex Olympian League in 1981.

### GUNNER GAIN VITAL POINTS AFTER HARD STRUGGLE

Basildon and Pitsea 4, Thundersley and Hadleigh 1

Basildon and Pitsea: Flack, Brown, Bromage, May, Ware, Ager, P Sadler, K Sadler, Holden, Beech, Tailor.

In his first game for the senior team R May did not let his side down.

*All the above players also played for Pitsea United*

Basildon Standard February 1965

Basildon and Pitsea 4, Southend Police 0

At Gun Meadow

Players: Lehrain, Brown, Broage, Laver, Beech, Griffin, Prentice, Read, Holden, Dowse, Ball.

Basildon, Billericay & Wickford Standard November 1965

# Ten new teams in Sunday League

With applications from 10 additional teams the Basildon Sunday League took a step forward on Wednesday by almost doubling its size and forming two divisions for next season.

The top league, containing ten teams will be called the Premier Division, and the other Division will have 11 teams.

Premier Division: Pitsea United, Peegasus, Sorrento, Pembroke, Hamlet Court, Priors Athletic, Bonallack, Ghyllgrove, Gifford Rangers, and Canvey Island T A .

*Basildon Standard June 1964*

Notes Armada Football Club: Disbanded in an amalgamation with Pitsea United in 1959.

*Basildon Standard June 1964*

## OLD FOOTBALL CLUB TO BE RESTARTED NEXT SEASON

The skull and crossbones emblem of Armada Football Club will fly again next season. Disbanded in an amalgamation with Pitsea United in 1959, the club is to come to life again with plans for two teams in the forthcoming soccer season, writes PETER LUCAS.

Because the latest tie-up between Pitsea United and Basildon Town virtually meant the end of all traces of Armada, old players and committee members got together on Tuesday night and decided to start the club again. Former secretary and founding member Mr George Bushnell, of Crest Avenue, Pitsea, the man behind the formation move-was "highly delighted" with the response.

"It is far better than I ever expected" he told me, And able to field two teams.

*Basildon Standard June 1964*

Pitsea United have given the club a set of white and red striped shirts, and these will be used by the first eleven. The reserves turn out in white shirts and black shorts, given by Mr K Sandeman.

*19th June 1964 Basildon Standard.*

Pegasus take Sunday League title after tough match with Pitsea.

Pegasus 6, Pitsea United 2.

*Basildon Standard March 1964*

GROVE THREE UP

Ghyllgrove Sports 3, Pitsea United 0

Ghyllgrove were given the winning incentive they needed after only a minute of this Premier Division Sunday League Match at New Lodge.

*Basildon Standard April 1965*

GUN MEADOW GROUND TAKES ON A NEW LOOK

Basildon and Pitsea Football Club: have given their Gun Meadow, Pitsea, ground a face-lift in preparation for the start of the new season - The first in the history of the Newly - Amalgamated Club.

*Peter Lucas Basildon Standard July 1964.*

DOUBLE SIX WERE UNLUCKY TO LOSE

Double Six 1, Pitsea United 3

Double Six came close to catching Pitsea in this Premier League match after they had fallen two goals behind.

*Basildon, Billericay & Wickford Standard November 1965*



## Pitsea go through after extra time at Rayleigh

Rayleigh Town 1, Pitsea United 2

*Basildon Standard 2nd November 1963*

## PITSEA TO REGAIN OLD GLORY?

Century old Pitsea United are all set to start their first season in the Southend and District League after an absence of 30 years.

*Basildon Standard 17th August 1963.*

### Pitsea United: Basildon Sunday League Premier Division

|                    | W  | D | L  | F  | A  | P  |
|--------------------|----|---|----|----|----|----|
| Sorrento .....     | 10 | 2 | 3  | 43 | 22 | 22 |
| Chesterhall ....   | 9  | 3 | 3  | 53 | 34 | 21 |
| Ghyllgrove ....    | 9  | 1 | 3  | 56 | 22 | 19 |
| Pegasus .....      | 9  | 0 | 3  | 51 | 18 | 18 |
| Pitsea United ..   | 8  | 1 | 2  | 34 | 17 | 17 |
| Canvey .....       | 5  | 0 | 6  | 28 | 30 | 10 |
| Priors Athletic .. | 4  | 2 | 5  | 28 | 32 | 10 |
| Hamlet Court ..    | 4  | 0 | 8  | 24 | 34 | 8  |
| Double Six ....    | 3  | 1 | 8  | 28 | 46 | 7  |
| Outwood Com. ...   | 3  | 0 | 11 | 33 | 66 | 6  |
| Gifford Rangers    | 1  | 0 | 13 | 12 | 65 | 2  |

*Basildon, Billericay & Wickford Standard March 1966*

|                     | W | D | L | F  | A  | P |
|---------------------|---|---|---|----|----|---|
| Sorrento .....      | 3 | 0 | 0 | 11 | 11 | 6 |
| Laindon Hotel ...   | 2 | 0 | 1 | 8  | 6  | 4 |
| Priors Athletic ... | 2 | 0 | 2 | 8  | 6  | 4 |
| Pitsea United ..... | 1 | 1 | 0 | 6  | 6  | 3 |
| Ghyllgrove .....    | 1 | 1 | 3 | 8  | 16 | 1 |
| Chesterhall .....   | 1 | 0 | 1 | 4  | 11 | 1 |
| Double Six .....    | 1 | 0 | 1 | 4  | 11 | 1 |
| Canvey .....        | 1 | 0 | 2 | 4  | 11 | 1 |
| Corringham .....    | 0 | 0 | 1 | 1  | 0  | 0 |
| Pegasus .....       | 0 | 0 | 1 | 0  | 0  | 0 |

*October 1966*

|                       | W | D | L  | F  | A  | P |
|-----------------------|---|---|----|----|----|---|
| Sorrento .....        | 4 | 0 | 1  | 18 | 6  | 8 |
| Laindon Htl. Utd. ... | 3 | 1 | 2  | 16 | 8  | 7 |
| Priors Ath. ....      | 3 | 0 | 2  | 12 | 8  | 6 |
| Pitsea Utd. ....      | 2 | 1 | 0  | 8  | 3  | 5 |
| Double Six .....      | 0 | 3 | 9  | 10 | 4  | 4 |
| Corringham .....      | 0 | 0 | 1  | 5  | 6  | 4 |
| Canvey .....          | 0 | 3 | 12 | 18 | 4  | 4 |
| Ghyllgrove .....      | 1 | 2 | 4  | 11 | 23 | 4 |
| Chesterhall .....     | 1 | 0 | 3  | 7  | 10 | 2 |
| Pegasus .....         | 1 | 0 | 2  | 4  | 10 | 2 |

*Basildon, Billericay & Wickford Standard*

*November 1966*

# INTEREDiate CUP MISHAPS CRUSH GUNNERS HOPES

Hornchurch Ath 2, Basildon and Pitsea 0

Essex Intermediate Cup

Players: Gregory, Brown, Bromage, Laver, Beech, Griffin  
Prentice, Read, Holden, Dowse, Taylor

*Basildon, Billericay & Wickford Standard January 1966*

## Cup holders are knocked out on their own ground

Pegasus 1, Pitsea United 2

Cup holders Pegasus are out of the Sunday League Premier Division Cup. They received a second round knock out on their own ground at the hands of Pitsea United on Sunday.

Billy Read 1, Pitt 1

*Basildon, Billericay & Wickford Standard 2nd December 1966*

It appears that Pitsea United continued as Pitsea United in the Sunday League Prem Division ,  
and some players played for both teams.

Basildon and Pitsea played in The Southend and District Premier Division.  
and played on Saturdays ?

## Cup holders are knocked out on their own ground

### Pegasus 1, Pitsea United 2

Cup holders Pegasus are out of the Sunday League Premier Division Cup. They received a second round knock-out on their own ground at the hands of Pitsea United on Sunday. Luckily for Pitsea, Flack was in brilliant form, pulling off astonishing saves from first Barlow and then Derby.

Beech and Bromage worked tirelessly in the Pitsea defence and Pegasus finally paid the penalty for their missed

Pitsea's goalkeeper Mick Flack, foils Pegasus Forward Harry Briley in Sunday's match at Herd Lane.



*Basildon, Billericay & Wickford Standard 2nd December 1966*



Pitsea United a happy team after their victory over Pegasus at Herd Lane, Corringham, on Sunday.

Mick Flack, Henry Beech and Bromage

*Basildon, Billericay & Wickford Standard December 1966*

## Sorrento snatch points from Pitsea

Sorrento 3, Pitsea United 2

FOR THE second game in succession Pitsea United had the Basildon Sunday League points snatched from them at Whitmore Park on Sunday.

Goal scorers for Pitsea Jimmy Staff and Read.

Flack, Clariage, Moseley, Creber, Spencer, Beech, Sadler, Staff, Holden, Read, Murphy.



*Basildon, Billericay & Wickford Standard January 1967*

## FAR-REACHING CHANGES AT FOOTBALL MEETING

Basildon Saturday and Sunday Leagues “Took over” The Football Section of the Sports Council on Thursday Week, voting in a block on all the main issues Saturday and Sunday League officials were able to get their proposals through.

*Peter Lucas and Peter Allen: Basildon Standard May 1967*



# FAR-REACHING CHANGES AT FOOTBALL MEETING

Basildon Saturday and Sunday Leagues "Took over" The Football Section of the Sports Council on Thursday Week, voting in a block on all the main issues Saturday and Sunday League officials were able to get their proposals through.

*Peter Lucas and Peter Allen: Basildon Standard May 1967*

## Basildon Sunday League's Premier Division

| LEAGUE TABLE     |    |   |    |    |    |    |
|------------------|----|---|----|----|----|----|
|                  | W  | D | L  | F  | A  | P  |
| Sorrento .....   | 11 | 3 | 3  | 47 | 24 | 25 |
| Chesterhall ...  | 10 | 3 | 4  | 58 | 40 | 23 |
| Pegasus .....    | 11 | 0 | 3  | 65 | 20 | 22 |
| Ghyllgrove ....  | 9  | 1 | 5  | 59 | 27 | 19 |
| Pitsea United .. | 8  | 3 | 3  | 33 | 21 | 19 |
| Priors Athletic  | 7  | 2 | 6  | 35 | 37 | 16 |
| Canvey .....     | 7  | 0 | 6  | 36 | 33 | 14 |
| Double Six ..... | 5  | 2 | 9  | 34 | 51 | 12 |
| Hamlet Court ..  | 4  | 0 | 11 | 26 | 39 | 8  |
| Outwood C. ..    | 4  | 0 | 13 | 38 | 84 | 8  |
| Gifford Rangers  | 1  | 2 | 14 | 15 | 70 | 4  |

Pitsea United 5th with 19 pts

*Basildon Standard April 1966*

## PITSEA'S TITLE HOPES NOT SO BRIGHT

### Pitsea United 1 Outwood Common 2

Beaten by lowly Gifford Rangers the pervious week, Pitsea's title hopes received a further setback on Sunday when they suffered a shock home defeat at the hands of another foot of the table Basildon Sunday League Premier Division side.

*Basildon, Billericay & Wickford Standard. April 1966*

## STAFF GETS CRACKING FOR PITSEA

Pitsea United 8, Chesterhall 1

A Brilliant individual display by Pitsea inside - forward Jimmy Staff shattered Chesterhall in this Premier League match on Sunday.

J Staff, Keith Sadler, Dick Murphy, Brian Creber, Des Pitt, Billy Read,

*Basildon, Billericay & Wickford Standard February 1967*

## SORRENTO SECOND IN SUNDAY LEAGUE

Pitsea United 2, Pegasus 3

Defeat at the hands of Pegasus on Monday prevented Pitsea United from taking the runners-up position in the Sunday League Premier Division, and pushed them down to fourth place.

|             | W  | D | L  | F  | A  | Pts |
|-------------|----|---|----|----|----|-----|
| Corringham  | 16 | 1 | 1  | 66 | 21 | 33  |
| Sorrento    | 12 | 1 | 5  | 34 | 29 | 25  |
| Pegasus     | 11 | 3 | 6  | 60 | 41 | 22  |
| Pitsea      | 10 | 3 | 8  | 62 | 57 | 23  |
| Canvey      | 11 | 0 | 7  | 57 | 40 | 22  |
| Laindon H.  | 8  | 1 | 11 | 36 | 43 | 17  |
| Priors Ath. | 6  | 1 | 11 | 47 | 61 | 13  |
| Double Six  | 5  | 1 | 12 | 37 | 58 | 11  |
| Ghyllgrove  | 3  | 3 | 12 | 30 | 68 | 9   |
| Chesterhall | 3  | 1 | 14 | 23 | 87 | 7   |

Pitsea United are shown as Pitsea

*Peter Lucas and Peter Allen: Basildon Standard May 1967*

## ATTRACTIVE SUNDAY CUP - TIES

This is cup week in the Sunday League. First and Second, have the semi-finals of their League Cups, and there are some very interesting clashes on the programme. In the Premier Division Corringham league leaders, clash with second-in-the-table Sorrento. The match will be played at Langdon Hills, k.o 11 am. The other final place will go to either Pitsea United or Laindon Hotel, again two evenly-matched sides, who meet at Gloucester Park.

*Basildon, Billericay & Wickford Standard March 1967*

## IMPRESSIVE PITSEA REACH FINAL

Pitsea United 4, Laindon Hotel United 2

Pitsea United got through to the final of the Basildon Sunday League Premier Division Cup with an impressive win over Laindon at Gloucester park on Sunday.

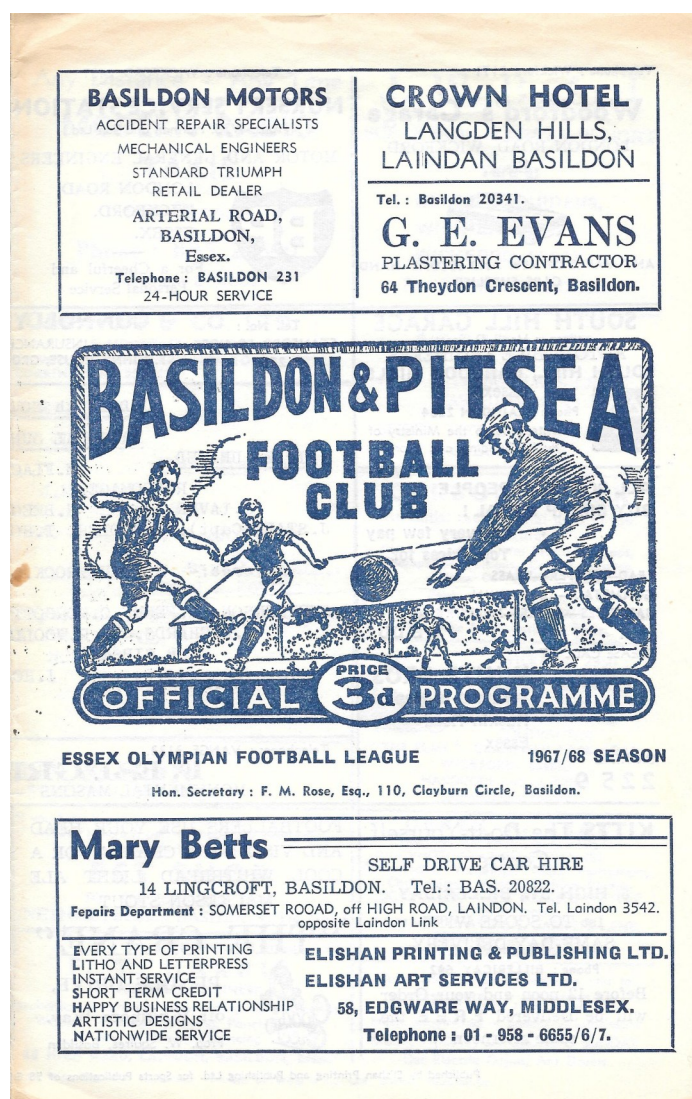
Scorers: Tony Holden 2, Staff 2

Flack, Creber, Holden, Staff, Fredericks, Beech, Sadler,

Mosley, Spencer, Stevens, Murphy,

*Basildon, Billericay & Wickford Standard March 1967*

# Pitsea United used Basildon & Pitsea Programmes



|                                   |                |                    |
|-----------------------------------|----------------|--------------------|
| <u>SUNDAY 5th NOVEMBER, 1967.</u> |                |                    |
| <u>NATIONAL SUNDAY CUP.</u>       |                |                    |
| <u>PITSEA UNITED.</u>             | M. FLACK.      | <u>K.O. IIam.</u>  |
| R. BROMAGE.                       | J. MOSELY.     |                    |
| J. LAVER.                         | H. BEECH.      | W. READ.           |
| J. STAFF (Capt).                  | K. SADLER.     | T. HOLDEN.         |
|                                   | G. WATSON.     | F. CHOROGCOD.      |
| Referee:-                         | Mr D.V. BROOK. | Linesmen:-         |
|                                   |                | Mr D.J. AXCELL.    |
|                                   |                | Mr J.A. ROBINSON.  |
| J. STEPHENSON.                    | G. FENN.       | C. NORCOTT (Capt). |
|                                   | G. ABROU.      | J. HAYWOD.         |
| C. RICHARDS.                      | R. WOOLLEY.    | B. HILL.           |
| B. GIBSON.                        | N. LEIGH.      |                    |
| MANOR (Barkingside).              | I. HOOK.       |                    |

Pitsea United v Manor (Barkingside)

Sunday 5th November 1967





|  |  |                                      |  |   |  |
|--|--|--------------------------------------|--|---|--|
| REFEREE:- MR.G.D.EVANS (BILLERICAY)                            |  | <u>PITSEA UNITED F.C.</u>            |  | COLOURS:- BLUE AND GOLD SHIRTS<br>GOLD SHORTS, TIE<br>AND GOLD STOCKINGS. |  |
|  |  | <u>GOAL</u><br>MICK PLACK            |  |   |  |
| <u>RIGHT BACK</u><br>COLIN SPENCER (CAPTAIN)                   |  | <u>LEFT BACK</u><br>BOB BROMAGE      |  |   |  |
| <u>RIGHT HALF</u><br>BRIAN CREBER                              |  | <u>CENTRE HALF</u><br>HENRY BEECH    |  | <u>LEFT HALF</u><br>TEX WILTSHIRE   |  |
| <u>OUTSIDE RIGHT</u><br>KEITH SADLER                           |  | <u>INSIDE RIGHT</u><br>JIMMY STAFF   |  | <u>OUTSIDE LEFT</u><br>DICK MURPHY  |  |
| <u>OUTSIDE LEFT</u><br>BRIAN FAYERS (CAPTAIN)                  |  | <u>INSIDE LEFT</u><br>JOHNNY DANIELS |  | <u>OUTSIDE RIGHT</u><br>BILLY ADAMS                                       |  |
| <u>LEFT HALF</u><br>JAKE HUBBARD                               |  | <u>CENTRE HALF</u><br>CLIVE SHILLING |  | <u>RIGHT HALF</u><br>FRANK HUTCHINSON                                     |  |
| <u>LEFT BACK</u><br>GARY SMITH                                 |  | <u>RIGHT BACK</u><br>RON ATKINSON    |  |   |  |
|  |  | <u>GOAL</u><br>DAVE BARBER           |  |   |  |
| LINESMEN:- MR.E.FAIRCHILD (TILBURY)<br>MR.F.SIMMONS (BASILDON) |  | <u>CORRINGHAM SOCIAL F.C.</u>        |  | COLOURS:- BLACK AND AMBER SHIRTS<br>BLACK SHORTS, AMBER<br>SOCKS.         |  |



# P I T S E A

# U N I T E D F. C.

MICKY FLACK (GOALKEEPER) Aged 20. The outstanding find in the Pitsea side this season. His consistent fine form has made him one of the finest Goalkeepers in the area and won him a place in the league side when he replaced former Pitsea star Dave Lebrhan.

JOHN MOSELY (FULL BACK) Aged 29. In his first season with Pitsea has proved a strong reliable defender and his consistency has proved too great a hurdle for many opposing star wingers this season.

COLIN SPENCER (FULL BACK) (CAPTAIN) Aged 31. One of the most travelled and experienced players on view today, with many seasons of senior football behind him as an Inside Forward with clubs like Wiltamston Avenue and Leyton F.C. Colin is the general of a Pitsea defence whose goals against record speaks for itself this season.

BOB BROMAGE (FULL BACK) Aged 26. A regular with Pitsea for many seasons now. Big and strong in the tackle and one of the hardest kickers of a dead ball you will see. Bob has made a remarkable comeback this season after a bad injury.

BRIAN CREER (RIGHT HALF) Aged 20. One of the five league representatives in the Pitsea side today. A brilliant ball player whose defence splitting through balls are incredibly intelligent for a player of his age.

HENRY BEECH (CENTRE HALF) Aged 29. One of the most controversial figures in local football. Henry has been playing for Pitsea since the age of 14 and it is hard to imagine a team playing at "The Gun" without him. Capped for the League side many times he is a fine all round hard player despite frequent clashes with opposing forwards.

TEX WILTSHIRE (LEFT HALF) Aged 23. One of the most talented players on view today. Tex has played for many senior clubs such as Henton, Redhill, Erith, and Gray Wanderers and only this season was in the Herten side who were beaten by Sander Town in the first round of the F.A. Cup.

BOB STEVENS (WING HALF) Aged 23. In his first season with Pitsea. Bob has proved a valuable asset. Extremely fit and a 100 per cent 90 minute player in whatever position he fills.

KEITH SADLER (OUTSIDE RIGHT) Aged 26. Slightly built but very difficult to hold once he has possession of the ball. A Pitsea player for several years and a great asset to the side.

JIMMY STAFF (INSIDE RIGHT) Aged 23. Pitsea's only recruit player. A brilliant ball player who on his day is virtually unplayable. Jimmy was a professional with Chelmsford City.

TONY HOLDEN (CENTRE FORWARD) Aged 23. The most feared player in the Pitsea Forward line. Big and strong, both in the air and on the ground, it was Tony's brilliant hat-trick that won the game for Pitsea in Corringham's only defeat this season. Previously with Wiltamston Avenue and Leytonstone F.C. He also holds the club record of 65 goals in season 1963/4.

AL FREDERICKS (INSIDE FORWARD) Aged 32. Very fit for his age, Alan is an excellent club man who has played for Pitsea many seasons and is the only player in the side who has played in every match this year.

DERS PITT (INSIDE FORWARD) Aged 26. Another good club man now in his 4th season with Pitsea. Des can always be relied upon to turn in a good performance in any position.

BILLY ALLEN (INSIDE FORWARD) Aged 31. A Pitsea player for many seasons whose versatility could bring him into the side today in the event of any injuries. A well known figure in local football Billy is well respected by both players and officials alike.

DICK MURPHY (OUTSIDE LEFT) Aged 35. The veteran of this side, but as many a full back will admit a real handful to cope with on the wing. In his younger days Dick played for many clubs in Senior Football.

BILLY READ (INSIDE FORWARD) Aged 28. Probably out of the side today through injury Billy will be a sad loss to the Pitsea forward line. A tremendous Haffield worker who can also be relied upon to score his fair share of goals.



## **BASILDON MOTORS**

ACCIDENT REPAIR SPECIALISTS

MECHANICAL ENGINEERS

STANDARD TRIUMPH

RETAIL DEALER

ARTERIAL ROAD,

BASILDON,

Essex.

Telephone : BASILDON 231

24-HOUR SERVICE

## **CROWN HOTEL**

LANGDEN HILLS,

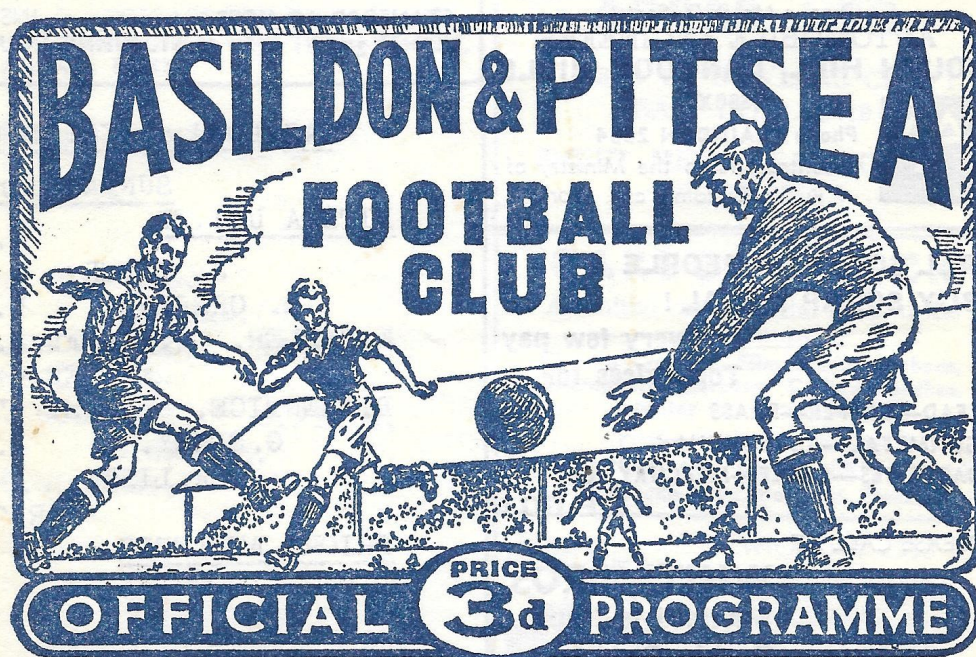
LAINDAN BASILDON

Tel. : Basildon 20341.

## **G. E. EVANS**

PLASTERING CONTRACTOR

64 Theydon Crescent, Basildon.



**ESSEX OLYMPIAN FOOTBALL LEAGUE**

**1967/68 SEASON**

Hon. Secretary : F. M. Rose, Esq., 110, Clayburn Circle, Basildon.

## **Mary Betts**

**SELF DRIVE CAR HIRE**

14 LINGCROFT, BASILDON. Tel. : BAS. 20822.

**Repairs Department** : SOMERSET ROAD, off HIGH ROAD, LAINDON. Tel. Laindon 3542.  
opposite Laindon Link

EVERY TYPE OF PRINTING  
LITHO AND LETTERPRESS  
INSTANT SERVICE  
SHORT TERM CREDIT  
HAPPY BUSINESS RELATIONSHIP  
ARTISTIC DESIGNS  
NATIONWIDE SERVICE

**ELISHAN PRINTING & PUBLISHING LTD.**

**ELISHAN ART SERVICES LTD.**

**58, EDGWARE WAY, MIDDLESEX.**

**Telephone : 01 - 958 - 6655/6/7.**

Pitsea United v Priors Athletic

Sunday 22nd October 1967

BASILDON & DISTRICT SUNDAY LEAGUE PREMIER CUP.

SUNDAY 22nd OCTOBER, 1967.

PITSEA UNITED.

W. FLACK.

J. LAVETT.

R. BROMAGE.

B. CRIBBER.

H. BEECH.

W. READ.

K. SADLER. J. STAFF. G. WATSON. F. THOROGOOD. R. MURPHY.

REFEREE:- Mr F. SIMPSON.

D. PRENTICE. B. COE. P. CRAWLEY. G. DUFFIN. D. FIRTH.

G. EDNEY.

S. GODFREY.

D. WALLIS.

K. LIST.

D. WOODLEY.

R. CORDERY.

PRIORS ATHLETIC.



# Pitsea United used Basildon & Pitsea Programmes

**BASILDON MOTORS**  
 ACCIDENT REPAIR SPECIALISTS  
 MECHANICAL ENGINEERS  
 STANDARD TRIUMPH  
 RETAIL DEALER  
 ARTERIAL ROAD,  
 BASILDON,  
 Essex.  
 Telephone : BASILDON 231  
 24-HOUR SERVICE

**R. A. TURNER & SON**  
 RAC. IRON AND METAL MERCHANTS  
 44 DURHAM ROAD, LAINDON, BASILDON, Essex  
 Buyers of all Ferrous and Non-Ferrous Metals,  
 also Rugs, Wooliens, Hair and Feathers.  
**BEST PRICES PAID**  
 Open 6 days a week—Mon. to Sat. from 8.30 a.m.  
 to 5.30 p.m.  
 Tel. : Basildon 20341.  
**G. E. EVANS**  
 PLASTERING CONTRACTOR  
 64 Theydon Crescent, Basildon.



**ESSEX OLYMPIAN FOOTBALL LEAGUE**      **1968/69 SEASON**

Hon. Secretary : F. M. Rose, Esq., 110, Clayburn Circle, Basildon.

**Mary Betts**      SELF DRIVE CAR HIRE  
 14 LINGCROFT, BASILDON. Tel. : BAS. 20822.  
 Repairs Department : SOMERSET ROAD, off, HIGH ROAD, LAINDON. Tel. Laindon 3542.  
 opposite Laindon Link

**GOOD COMPANIONS GARAGE**  
 CHELMSFORD ROAD,  
 BATTLESBRIDGE, RAYLEIGH, ESSEX.  
 REPAIRS SERVICE      REGENT OILS AND PETROL

|                                   |                       |             |               |               |                   |
|-----------------------------------|-----------------------|-------------|---------------|---------------|-------------------|
| <u>SUNDAY 2nd NOVEMBER, 1968.</u> |                       |             |               |               |                   |
| <u>NATIONAL SUNDAY CUP.</u>       |                       |             |               |               |                   |
| <u>2nd ROUND.</u>                 | <u>PITSEA UNITED.</u> |             |               |               | <u>K.O. 11am.</u> |
| M. FLACK.                         |                       |             |               |               |                   |
| R. CANN.                          |                       | J. LAVER.   |               |               |                   |
| G. WATSON.                        |                       | J. WAYLING. |               | T. WILTSHIRE. |                   |
| J. STAFF.                         | J. HAYES.             | A. HOLDEN.  | F. THOROGOOD. | R. SANGER.    |                   |
| Sub:- W. READ.                    |                       |             |               |               |                   |
| Sub:- W. BARNETT.                 |                       |             |               |               |                   |
| R. McBRIDE.                       | D. DRUM.              | B. RUSSELL. | J. HARRISON.  | L. BUSHFELL.  |                   |
| B. DANKS.                         |                       | J. WALKER.  |               | P. McARTHUR.  |                   |
| I. TAYLOR.                        |                       |             | P. McGRAY.    |               |                   |
| M. SHAW.                          |                       |             |               |               |                   |
| <u>CHADWELL SOCIAL.</u>           |                       |             |               |               |                   |

November 1968



Basildon Sports Council  
Football Challenge Cup  
Pitsea United F C  
F Thorogood  
Runners Up  
*Courtesy of Frank Thorogood*



Basildon Sunday League 1967 - 1968 Charity Cup  
Winners Pitsea United F C  
*Courtesy of Frank Thorogood*

## Leagues that Pitsea United played in ?.

This was found on a Web site ??

1909 Wickford and District League

1920 Essex Junior Cup

1922 Essex Junior Cup

1922 Westcliff and District League

1923 Westcliff and District League

1936 Southend & District League.

1946 – 47 London League

1947 Thurrock Combination League.

1951 London League

1954 London League

1956 London League

1958 London League (Dropped)

1958 South – Essex League

1959 South – Essex League

1961 Thurrock Thameside Combination League

1961 Thurrock Thames-side Premier Division

1963 Thurrock Thameside Combination Cup

1963 Southend & District League. ( It was also announced that the club's Saturday and Sunday sections are amalgamating for the new season to form one big committee and that only two Saturday sides will be run instead of three. The Sunday team will continue to play in the Basildon Sunday League. At the end of the meeting the Sunday section chairman Jack Dorrell)

1964 Southend and District League match.

1964 Sunday League

1964 Basildon Sunday League Championship

1966 Basildon Sunday League Premier Division

1967 Basildon Sunday League Premier Division Cup

1971 Basildon Sunday League Premier Division (Pitsea United may have dropped out late May 1971)

## PITSEA UNITED

(Football Club History Database)

?            Joined                      London League

1958        Left                                  London League

| SEASON  | LEAGUE | P  | W  | D | L  | F  | A   | P  | POS   |
|---------|--------|----|----|---|----|----|-----|----|-------|
| 1952-53 | LOND-1 | 24 | 14 | 4 | 6  | 58 | 47  | 32 | 3/13  |
| 1953-54 | LOND-1 | 26 | 11 | 5 | 10 | 51 | 46  | 27 | 6/14  |
| 1954-55 | LOND-1 | 26 | 8  | 3 | 15 | 45 | 66  | 19 | 13/14 |
| 1955-56 | LOND-1 | 26 | 7  | 4 | 15 | 54 | 83  | 18 | 10/14 |
| 1956-57 | LOND   | 28 | 3  | 1 | 24 | 29 | 86  | 7  | 15/15 |
| 1957-58 | LOND   | 30 | 2  | 7 | 21 | 36 | 101 | 11 | 16/16 |

## PITSEA UNITED Leagues played in

### Cup Games

Essex Junior Cup 3rd Round

November 27th kick off 2.15pm

Pitsea United v Grays Athletic

Chelmsford Chronicle 19th November 1920

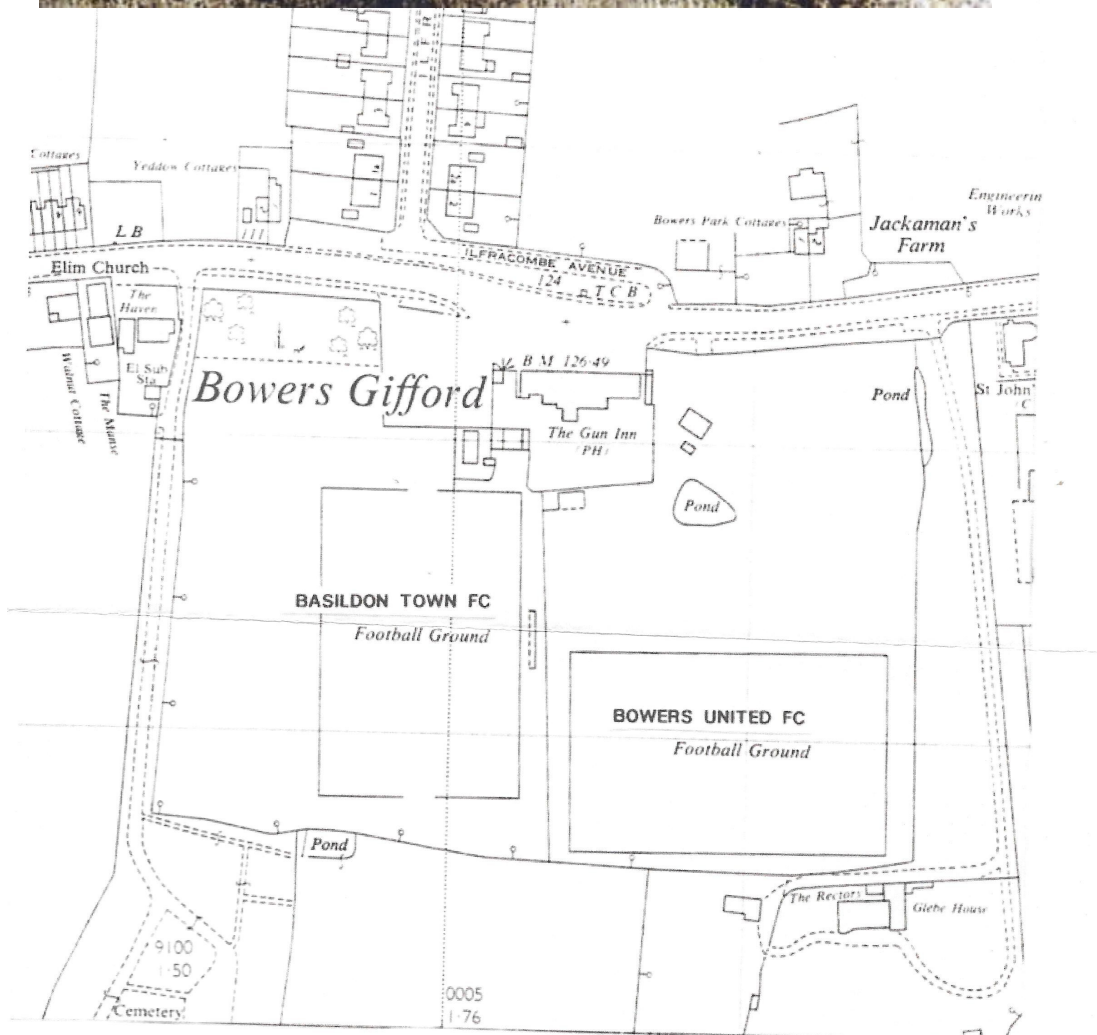
### Westcliff and District League

Rayleigh United 2 Pitsea United 1

Chelmsford Chronicle 23rd February 1923



# GUN MEADOW, BOWERS GIFFORD



AN OS MAP SURVEYED SHORTLY BEFORE CONSTRUCTION WORK BEGAN ON THE A13 PITSEA BY-PASS. THE NEW DUAL-CARRIAGEWAY LEFT THE GUN INN INTACT BUT SLICED STRAIGHT THROUGH THE MIDDLE OF BOTH FOOTBALL GROUNDS

From Basildon Town

Courtesy T Jeffreys & Peter Miles Essex Senior League Historian

# Sunday League positions

Latest positions in the Basildon and District Sunday Football League are:—

|                     | P | W | L | D | F  | A  | Pts |
|---------------------|---|---|---|---|----|----|-----|
| Pegasus .....       | 5 | 5 | 0 | 0 | 53 | 5  | 10  |
| Sorrento .....      | 5 | 5 | 0 | 0 | 31 | 4  | 10  |
| Bonallack .....     | 5 | 4 | 1 | 0 | 25 | 10 | 8   |
| Pitsea United ...   | 5 | 4 | 1 | 0 | 20 | 13 | 8   |
| A.M.E.C.O. ....     | 5 | 3 | 1 | 1 | 23 | 10 | 7   |
| Priors Athletic ... | 4 | 3 | 0 | 1 | 19 | 9  | 7   |
| Ghyllgrove .....    | 5 | 1 | 2 | 2 | 10 | 20 | 4   |
| Hamlet Court ...    | 5 | 1 | 4 | 0 | 16 | 22 | 2   |
| Pembroke .....      | 5 | 1 | 4 | 0 | 10 | 45 | 2   |
| Shell .....         | 4 | 0 | 4 | 0 | 3  | 18 | 0   |
| Gifford Rangers ..  | 5 | 0 | 5 | 0 | 6  | 29 | 0   |
| Gilbarco .....      | 5 | 0 | 5 | 0 | 1  | 37 | 0   |

5th October 1963

# BASILDON SUNDAY FOOTBALL LEAGUE

|                   | P  | W  | D | L  | F  | A  | P  |
|-------------------|----|----|---|----|----|----|----|
| Sorrento .....    | 15 | 13 | 1 | 1  | 74 | 35 | 27 |
| Bonallack's ..... | 14 | 10 | 1 | 3  | 74 | 27 | 21 |
| Pegasus .....     | 14 | 10 | 0 | 4  | 68 | 39 | 20 |
| Pitsea United ... | 15 | 9  | 0 | 6  | 73 | 42 | 18 |
| A.M.E.C.O. ....   | 14 | 7  | 1 | 6  | 43 | 39 | 15 |
| Shell .....       | 15 | 5  | 1 | 9  | 37 | 65 | 11 |
| Priors Ath. ....  | 13 | 5  | 0 | 8  | 42 | 46 | 10 |
| Ghyllgrove .....  | 13 | 4  | 1 | 8  | 35 | 52 | 9  |
| G.P.O. ....       | 14 | 4  | 1 | 9  | 35 | 60 | 9  |
| T.E.C. ....       | 15 | 1  | 0 | 14 | 22 | 98 | 2  |

6th April 1963

# HOW THEY STAND

Basildon Sunday League Premier Division positions are:

|                    | W  | D | L  | F  | A  | P  |
|--------------------|----|---|----|----|----|----|
| Sorrento .....     | 10 | 2 | 3  | 43 | 22 | 22 |
| Chesterhall ....   | 9  | 3 | 3  | 53 | 34 | 21 |
| Ghyllgrove ....    | 9  | 1 | 3  | 56 | 22 | 19 |
| Pegasus .....      | 9  | 0 | 3  | 51 | 18 | 18 |
| Pitsea United ..   | 8  | 1 | 2  | 34 | 17 | 17 |
| Canvey .....       | 5  | 0 | 6  | 28 | 30 | 10 |
| Priors Athletic .. | 4  | 2 | 5  | 28 | 32 | 10 |
| Hamlet Court ..    | 4  | 0 | 8  | 24 | 34 | 8  |
| Double Six ....    | 3  | 1 | 8  | 28 | 46 | 7  |
| Oatwood Com. ...   | 3  | 0 | 11 | 33 | 66 | 6  |
| Gifford Rangers    | 1  | 0 | 13 | 12 | 65 | 2  |

4th March 1966

# Thurrock Thameside Combination

PREMIER DIVISION

|                     | P  | W | D  | L  | F  | A  | P  |
|---------------------|----|---|----|----|----|----|----|
| Orsett Ath. ....    | 19 | 6 | 11 | 2  | 37 | 25 | 23 |
| Bowers Utd. ....    | 16 | 7 | 7  | 2  | 29 | 13 | 21 |
| P.L.A. ....         | 18 | 7 | 7  | 4  | 35 | 25 | 21 |
| Tilbury C.C. ....   | 20 | 5 | 10 | 5  | 19 | 11 | 18 |
| Stifford Clays ...  | 16 | 5 | 9  | 2  | 19 | 21 | 18 |
| Pitsea Utd. ....    | 17 | 6 | 7  | 4  | 26 | 21 | 18 |
| Basildon Town ...   | 20 | 6 | 7  | 7  | 31 | 30 | 18 |
| Marconi Utd. ....   | 19 | 5 | 8  | 6  | 26 | 25 | 17 |
| Oakside .....       | 16 | 5 | 7  | 4  | 26 | 27 | 16 |
| Corringham .....    | 16 | 4 | 8  | 4  | 15 | 21 | 15 |
| Stifford Rovers ... | 18 | 2 | 11 | 5  | 21 | 29 | 14 |
| Laindon Utd. ....   | 18 | 3 | 8  | 7  | 19 | 28 | 14 |
| Rainham O.B. ....   | 22 | 2 | 8  | 12 | 21 | 50 | 12 |

6th April 1963

# LEAGUE TABLES

BASILDON SUNDAY League positions:

PREMIER DIVISION

|                  | W  | D | L  | F  | A  | Pts |
|------------------|----|---|----|----|----|-----|
| Corringham ...   | 14 | 0 | 1  | 55 | 22 | 28  |
| Sorrento .....   | 11 | 1 | 2  | 48 | 21 | 23  |
| Pitsea .....     | 9  | 3 | 3  | 53 | 26 | 21  |
| Canvey .....     | 10 | 0 | 7  | 55 | 48 | 20  |
| Pegasus .....    | 8  | 1 | 4  | 56 | 35 | 17  |
| Laindon H....    | 6  | 1 | 9  | 36 | 41 | 13  |
| Priors Ath. .... | 5  | 1 | 10 | 44 | 60 | 11  |
| Double Six ...   | 4  | 1 | 12 | 36 | 55 | 9   |
| Ghyllgrove ....  | 3  | 3 | 12 | 30 | 68 | 9   |
| Chesterhall ...  | 3  | 1 | 13 | 43 | 80 | 7   |

DIVISION I

1st April 1966



| <b>HOW THEY STAND</b>              |   |   |    |    |    |   |    |
|------------------------------------|---|---|----|----|----|---|----|
| Basildon Sunday League positions:— |   |   |    |    |    |   |    |
| <b>PREMIER DIVISION</b>            |   |   |    |    |    |   |    |
|                                    | W | D | L  | F  | A  | P |    |
| Sorrento .....                     | 4 | 0 | 1  | 18 | 6  | 7 | 1  |
| Laindon Htr. Utd.                  | 3 | 1 | 2  | 16 | 8  | 7 | 2  |
| Priors Ath.                        | 3 | 0 | 2  | 12 | 8  | 6 | 3  |
| Pitsea Utd.                        | 1 | 1 | 0  | 8  | 3  | 3 | 4  |
| Double Six .....                   | 0 | 3 | 9  | 10 | 4  | 4 | 5  |
| Corringham .....                   | 0 | 1 | 5  | 6  | 4  | 4 | 6  |
| Canvey .....                       | 0 | 3 | 12 | 18 | 4  | 4 | 7  |
| Ghyllgrove .....                   | 1 | 2 | 4  | 11 | 23 | 4 | 8  |
| Chesterhall .....                  | 1 | 0 | 3  | 7  | 10 | 4 | 9  |
| Pegasus .....                      | 1 | 0 | 2  | 4  | 10 | 4 | 10 |

4th November 1966

| <b>LEAGUE TABLE</b> |    |   |    |    |    |    |  |
|---------------------|----|---|----|----|----|----|--|
|                     | W  | D | L  | F  | A  | P  |  |
| Sorrento .....      | 11 | 3 | 3  | 47 | 24 | 25 |  |
| Chesterhall ....    | 10 | 3 | 4  | 58 | 40 | 23 |  |
| Pegasus .....       | 11 | 0 | 3  | 65 | 20 | 22 |  |
| Ghyllgrove ....     | 9  | 1 | 5  | 59 | 27 | 19 |  |
| Pitsea United ..    | 8  | 3 | 3  | 33 | 21 | 19 |  |
| Priors Athletic     | 7  | 2 | 6  | 35 | 37 | 16 |  |
| Canvey .....        | 7  | 0 | 6  | 36 | 33 | 14 |  |
| Double Six .....    | 5  | 2 | 9  | 34 | 51 | 12 |  |
| Hamlet Court ..     | 4  | 0 | 11 | 26 | 39 | 8  |  |
| Outwood C. ..       | 4  | 0 | 13 | 38 | 84 | 8  |  |
| Gifford Rangers     | 1  | 2 | 14 | 15 | 70 | 4  |  |

| <b>RESULTS</b>  |  |
|---|--|
| <b>BASILDON Sunday League</b>   |  |
| results were:—  |  |
| <b>Premier Division:</b> Canvey 1, Hamlet Court 0; Sorrento 2, Priors Athletic 0; Pitsea United 1, Outwood Common 2; Double Six 1, Gifford Rangers 1. |  |
| <b>Division I:</b> Dunton Park 1, Corringham 3; Stability 2, Ilfords 1; Kingswood 2, Shell 5.   |  |
| <b>Reserve Section:</b> Hamlet Court 1, Sorrento 1; Ghyllgrove 3, Chesterhall 1; Outwood Common 0, Canvey 6.  |  |

1st April 1966

**Thanks**

Pitsea United, one of the founder members of the Basildon Sunday League, who have been forced through various circumstances to withdraw next season, will receive a letter of thanks from the league for their support over the years.

Standard Recorder May 1971

I have not been able to find the letter from the League

# PITSEA FOOTBALL CLUB

From the remains of Pitsea United F.C., Pitsea F.C was formed by Mr Peter Feltham, and was first known as Pitsea Young Peoples Club.

The average age was about 15, but as there were very few youth League's in that area at that time, they went straight into men's football in the Third division of the Vange & District Sunday League, after the first season they dropped the 'Young Peoples Club' and became known as PITSEA Football Club.

Chris La-Rocque played in the very first Pitsea F.C Side in the 1970-71 season, Chris of the Bull Public House, Pitsea continued as sponsor and also became a Chairman of the Club.

**PITSEA FOOTBALL CLUB**

**PITSEA  
FOOTBALL CLUB**

Founded 1970  
Affiliated to the Football Association  
and the Essex County Football Association.  
Members of the Basildon & District Sunday League.

**Ground:**  
Nevendon Road Recreation Ground,  
next to the Fire Station, Wickford.

**League History:**  
1970 - 1975  
Vange Sunday League  
1975 - Present  
Basildon & District Sunday League

**OFFICIALS**  
**PRESIDENT:**  
Bob Bromage  
**VICE-PRESIDENT:**  
Chris La-Rocque  
**CHAIRMAN/TREASURER:**  
Dave Chaplin  
01268 455066 or 0958 532478  
**SECRETARY/ PROGRAMME EDITOR:**  
Mark Kettlely  
01277 636149 or 0956 353136  
**JOINT MANAGER:**  
Amin Levitt  
01268 416327 or 0411 513333  
**JOINT MANAGER:**  
Shaun Scanlan  
01702 313182  
**HONOURS:**  
**BASILDON & DISTRICT  
SUNDAY LEAGUE**  
Senior Division Champions:  
1995, 1996, 1997  
Premier Division Champions:  
1987  
Charity Cup Winners:  
1995, 1996, 1998  
Senior Division Cup Winners:  
1996, 1997, 1998  
FA Sunday Cup Semi-Finalists:  
1998  
Essex Sunday Intermediate  
Cup Semi-Finalists:  
1998

courtesy of Terry Jeffreys

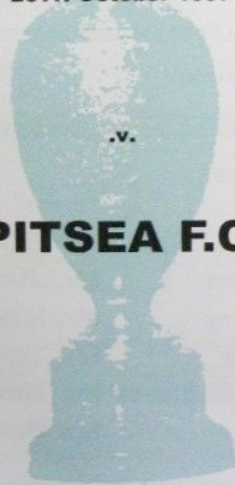




**MAILCOACH**  
F.C.

**F.A. SUNDAY CUP**

FIRST ROUND  
26TH October 1997



.v.

**PITSEA F.C.**



**PITSEA F.C.**

**F.A. SUNDAY CUP**

FIRST ROUND REPLAY

SUNDAY 2<sup>ND</sup> NOVEMBER 1997

.v.



**MAILCOACH**  
F.C.

# THE F.A. ALL ENGLAND SUNDAY CUP

## Pitsea

Sponsored by **THE BULL, PITSEA.**

**VERSUS**

**Hammer F.C.**  
(WATFORD)

**AT**  
**GLOUCESTER PARK BOWL,**  
**BASILDON.**

**ON**  
**SUNDAY,**  
**24th NOVEMBER, 1996**

**KICK OFF 02:00pm.**

**ADMISSION £2**  
**O.A.P., CHILDREN £1**

## THE TEAMS

### PITSEA F.C. (ALL BLUE)

JASON THOMPSON  
DARREN GEORGE  
SPENCER PARDOE  
JAMIE RUSSELL  
JOHN TIANNI  
CARL FANNON  
WESLEY FAULKNER  
JAMES BUTLER  
SHAUN SCANLON  
TONY REVELL  
ALAN BROMAGE  
JOHN TAYLOR  
TONY SILVERSTONE  
JOHN EDWARDS  
ANDREW CHIVERS  
NEIL THOMPSON  
LEE GOODWIN  
GRANT LEE  
TONY BIDDISS  
BARRY RAINBIRD  
GLEN NICHOLLS

### HAMMER F.C. (YELLOW & GREEN)

SIMON BARTLEY  
PAUL JONES  
MARK ASH  
ALAN DEAN  
DANNY WADMORE  
BARRY WYLDE  
PAUL JOHNSON  
TERRY HOWS  
DAVE CARLISLE  
MARK GOODMAN  
CRAIG POWELL  
IAN MORGAN  
IAN LEE  
ALAN DUNTON  
DARREN GRIEVES  
PHIL WALKER  
RICHARD GALVIN  
ROBERT GREEN  
PHIL TILLEY  
GRAHAM JOYCE  
RICHARD BENSON  
TOMMY HOLT

EDMONN LEVITT  
DAVE CHAPLIN

-MANAGER-  
-ASSISTANT MANAGER-  
-PHYSIO-

PAUL JOHNSON  
ALAN CHILDS  
BOBBY BELL

**THE BULL PITSEA**  
**SPONSORS OF**  
**PITSEA**  
**FOOTBALL CLUB**

## REFEREE

MR. D.J. BROWN (Hornchurch)

## ASSISTANT REFEREES

MR. K. CHARLES (Waltham Abbey)  
MR. R. MARTIN (Brentwood)

If the scores are level after 90 minutes, extra time will be played.

### Pitsea, a brief history.

Pitsea were formed approximately 25 years ago, they play in the Basildon Sunday League, and have been very successful domestically over the last two years. In the season 1994 they won the Senior League, along with the Charity Cup. Last year they went one better and did the treble, winning both the League and League Cup, with the Charity Cup also being retained by them.

However, they have not been able to take that domination with them to the National Cup. Entering for the first time two years ago they have not progressed past the second round. They are sponsored by Mr. Chris La Rocque and Mr. Alan Bromage (The Bull Public House).

Previous Round - Cavaliers 3, Pitsea 3 (after extra time). Replay Pitsea 3, Cavaliers 2.

### Hammer, a brief history.

Founded in 1962, Hammer F.C. are the longest serving team currently playing in the south West League. Over the years Hammer has won all of the domestic trophies, and in the last six years have won both the Premier League and the Challenge Cup twice.

Our record in the Sunday Cup has been good over the last four years, reaching the last 16 two years ago. Last year run ended at Willen F.C. from Milton Keynes 2-1, Willen bowed out in the semi-finals to the holders and eventual winners St. Josephs (Luton).

Of the twenty four available players printed in this programme, most are or have been associated with Sun Sports F.C. who have won the Herts Senior County League and Aubrey Cup twice each over the last few years.

**BOWERS UTD**

Formed 1946 – as BOWERS UTD

And in 2004 – Absorbed **PITSEA FC**

Pitsea Athletic 1895 – 1910

Pitsea United 1909 – 1971.

Pitsea Football Club. 1970

In 2004 Pitsea FC was absorbed by Bowers Utd.

### Basildon United F.C.

Basildon United's roots go back to 1955, when a club named Armada Sports was formed, joining Division One of the Southend & District League. In 1959 Armada Sports merged with London League club Pitsea United, with Pitsea United effectively absorbing Armada Sports. However, Armada Sports later split from Pitsea United and were renamed Basildon United in 1967. The club joined the Thurrock Thames-side.

Pitsea United have given the club a set of white and red striped shirts, and these will be used by the first eleven. The reserves turn out in white shirts and black shorts, given by Mr K Sandeman.

*19th June 1964 Basildon Standard.*

### Basildon Town F.C.

In 1964, the club merged with Pitsea United to form Basildon & Pitsea, becoming founder members of the Essex Olympian League in 1966. Two years later, the club reconstituted back to Basildon Town. During the 1970s, Basildon Town played in the Basildon & District League and Southend & District League, before re-joining the Essex Olympian League in 1981.



## VANGE BOOKLETS

All Saints Church Hall 1931 £2.10

Barges at Vange Wharf £2.10

Cashes Well No5 £2.10

John (Paddy) Hemingway £1.50

The Barge Inn 1832 – 2015 £2.50

The Bull Public House 1878— 1961 £1.50

The Vange Crystal Well £1.50

Vange Board School 1876 £5.80

Vange Fire Station 1934 – 1962 £3.90

Vange Hall Brick Works 1886—1921 £3.30

Vange Reservoir & Southend Water Company £2.00

Vange Swimming Pool 1933-1952 £2.00

The Shops of Vange London Road & High Road £5.00

The 1st Pitsea and Vange Scouts 1913—1970 £4.50

3rd Battalion Essex Home Guard. Vange and Pitsea. £2.80

Royal Observer Corps, Monitoring Post, Vange, Essex. £2.10

## BASILDON BOOKLET

Locarno Mecca Dancing £6.00 1961 - 1971

## PITSEA BOOKLETS

W. J. Wager Dairies £1.50

Tuskite Works Pitsea Hall Lane £1.50

Broadway Cinema 1930—1970 £3.00

Pitsea United 1909—1971 £8.70

The Old Pitsea Market 1924—1969 £2.60



Ken Porter 07968 313614

[Kenneth.f.porter@gmail.com](mailto:Kenneth.f.porter@gmail.com)

[jo-cullen@mail.com](mailto:jo-cullen@mail.com)

Mobile 07552 947687

FaceBook: Basildon Heritage

[www.basildonheritage.org.uk](http://www.basildonheritage.org.uk)

[basildonheritage@outlook.com](mailto:basildonheritage@outlook.com)

**Basildon Heritage**  
The Green Centre  
Wat Tyler Country Park  
Pitsea Hall Lane  
Pitsea, Basildon  
Essex.  
SS16 4UH.

Monday & Wednesday's 10am—12pm

Saturdays 10am—3pm